



# KEW GARDENS

Aged Care







# Reception



Welcome to Kew Gardens Aged Care. Set amongst beautiful landscaped grounds and surrounding parklands, Kew Gardens Aged Care is a 100 bed Extra Service residential care facility, occupying a prime residential location adjacent to and overlooking the magnificent Alexandra Gardens in close proximity to the Kew Junction and its shopping strip, the Kew Library and several major hospitals. The multi level facility, features luxurious amenities and is designed to meet and exceed current environmental design requirements, offering a mix of Extra Service ageing in place programs.

From the moment you arrive at Kew Gardens, you know you are entering an aged care facility that cherishes the quality of life.

The Matthies Family has been involved in Aged Care since the early 1960's.

Keith and Betty Matthies are acknowledged by the Aged Care Industry as being amongst its early innovators and instrumental in guiding the industry to where it is today.

They were one of the first operators to build and operate new purpose built facilities in the 1970's and early 1980's and were also the founders and operators of Canterbury Nursing Home from 1966 to their retirement in the mid 2000's.

Their son John Matthies the Managing Director of Australian Aged Care Group Pty. Ltd. has had a life long involvement in this industry (both as an operator and Lawyer) and was keen to perpetuate the legacy of his parents. John spent several years looking for a suitable site to build a state of the art facility meeting the needs and expectations of baby boomers (of which he is one) together with people of his parents generation.

He was fortunate to locate a suitable site in Gellibrand Street, Kew previously occupied as the residence of the Catholic Archbishop. No expense has been spared in the building of Kew Gardens Aged Care. The new facility includes a cinema, cafe, bar, BBQ courtyards, private dining room with sitting and dining rooms overlooking Alexandra Gardens and retains a homelike appearance and ambience that has resulted in Kew Gardens being acknowledged as the benchmark facility of the Aged Care Industry. "In turning full circle" John's parents Betty and Keith are now residents.

We are confident that your parents or relatives will likewise feel at home at Kew Gardens and be extremely comfortable with our facilities, amenity and care.

We look forward to seeing you at Kew Gardens.

### **John Matthies**



***The Matthies  
Family has been  
involved in Aged  
Care since the  
early 1960's***





## Comfort

Architecturally designed and built, this ultra modern complex provides a warm and friendly environment offering your loved one unparalleled opportunities for relaxation and/or entertainment. Elegantly appointed and decorated, the ensuited private rooms and suites ensure privacy and dignity for each resident. Residents will feel comfortable and reassured by the professional and attentive service provided by our dedicated team of nurses, carers and allied health care professionals.



We provide an extensive range of services to assist residents to remain active and engaged.

*These include:*

- Single rooms with ensuite bathrooms
- Supersuites with fully equipped kitchenettes/lounge area for people wanting that extra space
- Visitors Suite
- Chapel (non denominational)
- Alfresco Cafe & Bar
- Cinema
- Residents bus – for regular excursions and outings
- Plasma TV screens in every room
- Individually controlled heating and air conditioning in every room
- Telephone and Foxtel connection points in every room
- Piano Lounge
- Numerous lounge, sitting and recreational areas within the fully air conditioned facility
- Elegant quality surrounds and decor
- Selection of superb meals from our à la carte style menu
- Private dining room for dinner parties or functions
- Wellbeing Centre
- BBQ and open air courtyard areas
- Library and reading rooms
- On-site hairdressing
- Visiting hours 24 hours, 7 days a week
- Business Centre
- On-site undercover car parking
- Walking distance to public transport
- Bore and Desalination plant (solely for garden use) to ensure year round green lawns, maintenance of gardens

Diversional therapy, dietician, speech therapy, beauty therapy, music therapy, physiotherapy, podiatry, massage and aromatherapy, and a choice of doctors are also available.

Our hospitality services team attends to food service, laundry and housekeeping, providing premium services to all residents.











# *Lifestyle*

Our lifestyle and recreation services team provide a rich and varied program of activities and experiences tailored to meet individual interest, cultural backgrounds, social, emotional, and physical abilities. We host a range of high quality, active and diverse social events that cater for individual needs and preferences of our residents and their families.

- Bus outings
- Concerts / Sing-a-longs
- Bingo / Quizzes
- Card Nights
- Group discussions including reminiscing
- Gentle exercises
- One on One programs
- Pet Therapy
- Happy Hour
- Aromatherapy
- Sensory Activities
- Museum memorabilia
- Cultural Celebration Days
- Regular visits from schools, community and visiting library
- Men's Group
- Music Therapy
- Monthly BBQs
- Ball Games
- Crosswords
- Cooking
- Gardening

Cultural celebrations, religious observances, entertainers and special guests are also frequently enjoyed calendar features.

Family and friends are always welcome and have unrestricted visiting hours.







# *Care and Support*

All Kew Gardens Aged Care staff are carefully selected and considered the best in their field. They are highly skilled and experienced aged care and allied health professionals experienced in dementia and palliative care and take pride in making a positive difference to the lives of our residents.

By offering a comprehensive range of care options, the concept of “ageing in place” removes the need for any subsequent move to another facility. Our staff are committed to consistently delivering first class individually focused care based on an intimate knowledge of each resident’s personal requirements.

Being an Extra Service Facility Kew Gardens maintains higher staff to resident ratios than regular facilities. Individual service care/care plans are designed to ensure quality service to all residents.





# Meals

Fine dining is assured at Kew Gardens. Our chef caters to specialist dietary needs including a selection of freshly prepared meals from our à la carte style menu with residents having a variety of meal choices and cuisines.

There's also a private dining room that you can book for dinner parties or functions at a small cost: and all the preparation and clear up is someone else's responsibility.







## **Breakfast**

Baked Beans on Toast  
Bacon and Hash Browns  
Scrambled Eggs  
Plain or Fruit Toast  
Choice of Cereals, Porridge, and Fruit Juices  
Cheese Omelette  
Pancakes with Maple Syrup  
Poached Egg & Sausage

## **Lunch**

Fish & Chips  
Roast Lamb served with Rosemary Gravy  
Grilled Steak with Onion Gravy  
Grilled Chicken with Mushroom Sauce  
Pork with a Honey and Apple Glaze  
Corned Silverside served with a Mustard Sauce  
Lamb Casserole with Hint of Garlic  
Honey Soy Chicken Pieces

## **Dinner**

Soup of the Day  
Chicken and Vegetable Lasagne served with a Garden Salad  
Lamb and Herb Patties served with Parsley Potatoes  
Homemade Fishcakes with a Green Side Salad  
Vegetable Frittata served with Fresh Tomato Sauce, Mashed Potatoes, Peas and Corn  
Lamb Meatballs served with a Tomato Sauce and Mashed Potato  
Vegetarian Pasta  
Beef Bolognese Penne  
Choice of Assorted Sandwiches

## **Desserts**

Fresh Fruit Salad  
Pear Halves and Ice Cream  
Orange and Apricot Sponge and Custard  
Apple Crisp and Ice Cream  
Banana Fingers and Cream  
Homemade Scones  
Fruit Trifle and Cream  
Passionfruit Flummery and Cream  
Sticky Date Pudding and Custard

## **Beverages**

Choice of Fruit Juices, Beer, Wine, Soft Drink, Tea and Coffee

# Alexandra Gardens

Kew Gardens  
22-24 Gellibrand Street

Ground Level Plan

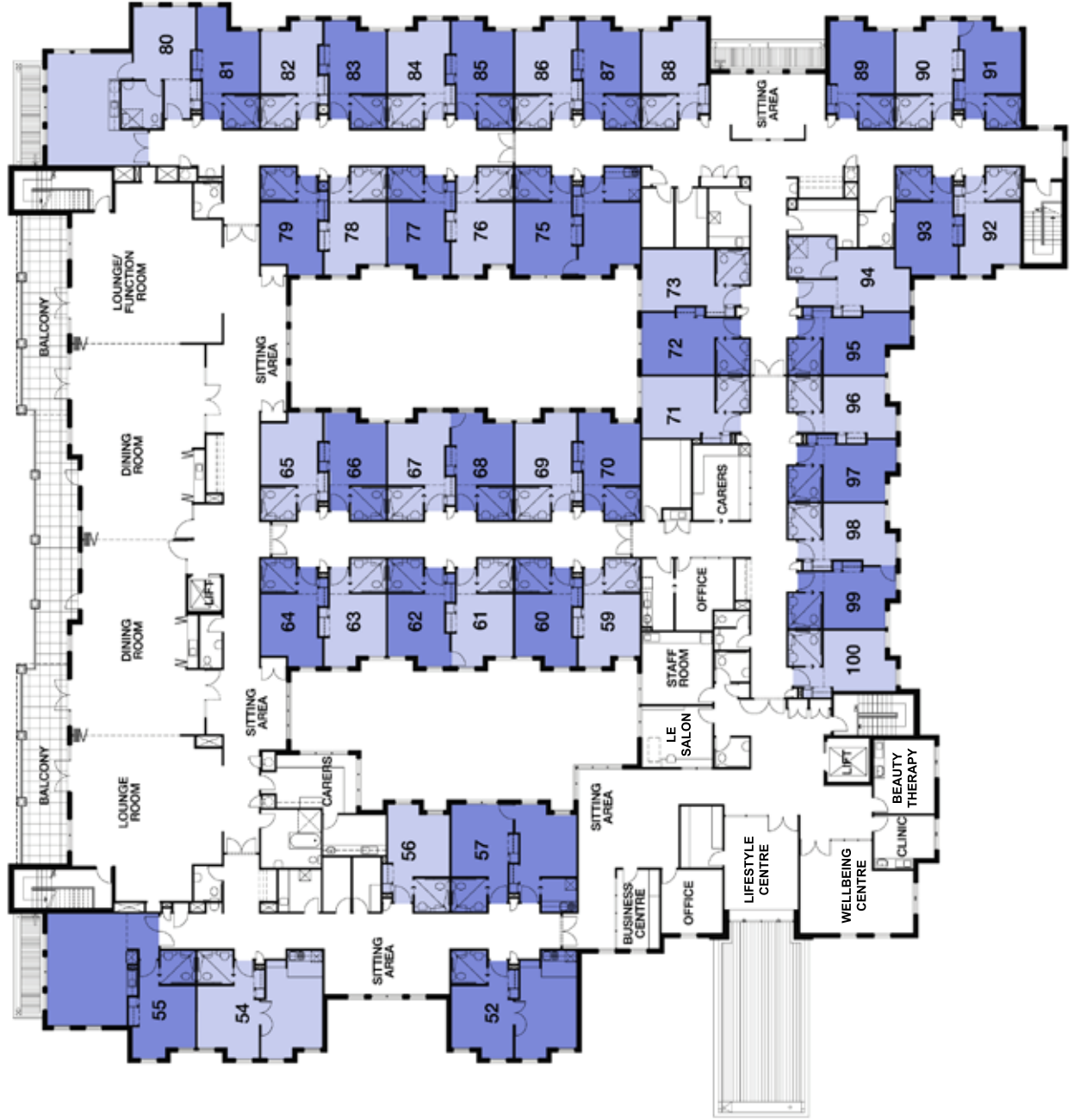


- Resident level with options of one and two room suites
- Lounge Rooms
- Dining Rooms
- Sitting Rooms
- Alfresco & Bar
- Cinema
- Alexandra Private Dining
- Library
- Sheltered Courtyards and outdoor Terraces





- Residential level with optic of one end two room Suite
- Lounge Rooms
- Dining Rooms
- Sitting Rooms
- Lifestyle Centre
- Business Centre
- Le Salon
- Wellbeing Centre
- Beauty Therapy
- Balconies with view over Alexandra Gardens



# Kew Gardens

22-24 Gellibrand Street



## Basement Level Plan

- Reception
- Administration
- Chapel
- Visitors Suite
- Board Room
- Learning & Development Centre
- Main Kitchen
- Laundry
- Visitor and Staff Carpark





# Kew Gardens

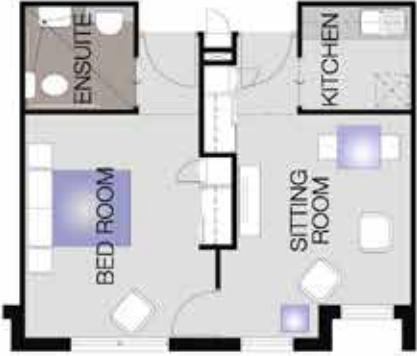
22-24 Gellibrand Street

## Room Options



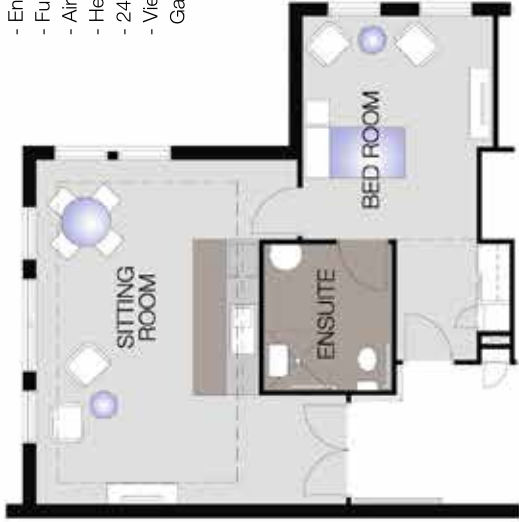
SUITE TYPE 1

- Suite Type 1 & 2 features:
- Bedroom
  - Sitting Room
  - Kitchenette
  - Ensuite Bathroom
  - Furnishings
  - Air Conditioning
  - Heating
  - 24 Hour Call System

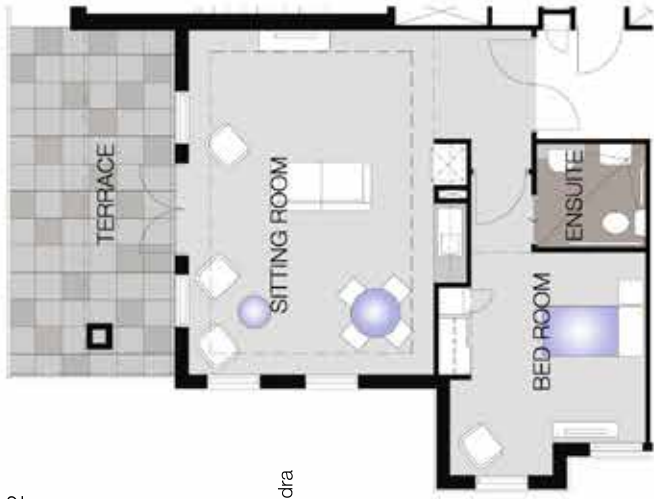


SUITE TYPE 2

- Super Suites Type 1 & 2 features:
- Bedroom
  - Sitting Room
  - Kitchenette
  - Ensuite Bathroom
  - Furnishings
  - Air Conditioning
  - Heating
  - 24 Hour Call System
  - Views overlooking Alexandra Gardens



SUPER SUITE TYPE 1



SUPER SUITE TYPE 2


- One Room Suite features:
- Bedroom
  - Ensuite Bathroom
  - Furnishings
  - Air Conditioning
  - Heating
  - 24 Hour Call System



ONE ROOM SUITE





A photograph of a modern, multi-story residential building with a mix of brick and light-colored siding. The building features several windows and a prominent gabled roofline. In the foreground, there is a low brick wall with a metal fence, and a paved walkway runs alongside a green lawn. A large tree with green leaves is visible on the right side of the frame. The sky is blue with some light clouds.

We know moving will still be a difficult decision. We also know we've done everything possible to make it that much easier. It's this commitment to best practice that creates great peace of mind and makes Kew Gardens Aged Care a truly remarkable facility.

To discuss your individual requirements and experience Kew Gardens lifestyle first hand please telephone **(03) 9261 8600.**





22-24 Gellibrand Street  
Kew VIC 3101  
PO Box 2184 Kew VIC 3101  
**T** 03 9261 8600  
**F** 03 9261 8666  
**[www.kewgardens.com.au](http://www.kewgardens.com.au)**  
ABN 84 936 760 834