



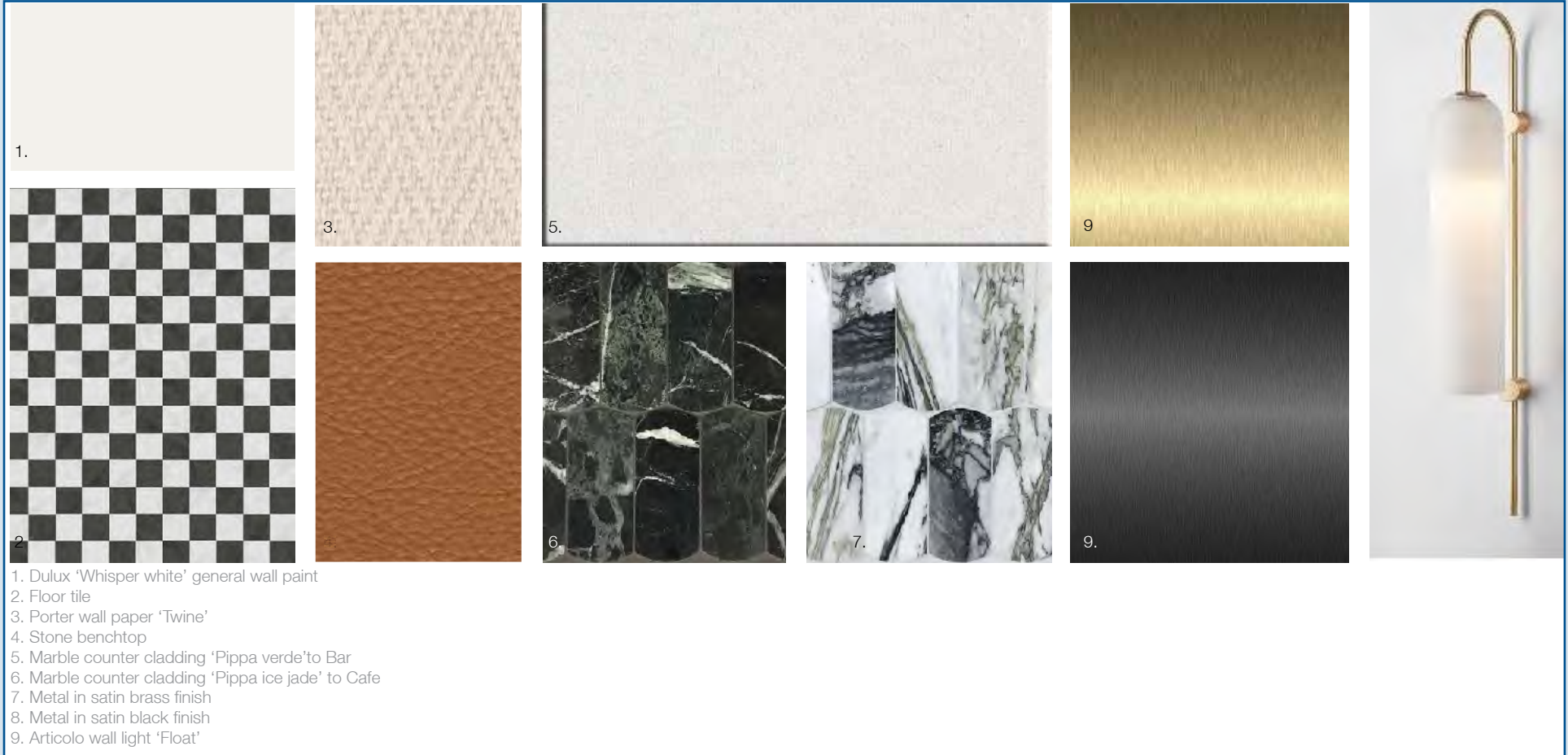
Kew Gardens Extension



Lower Ground Cafe & Bar Inspiration



Cafe & Bar 3D



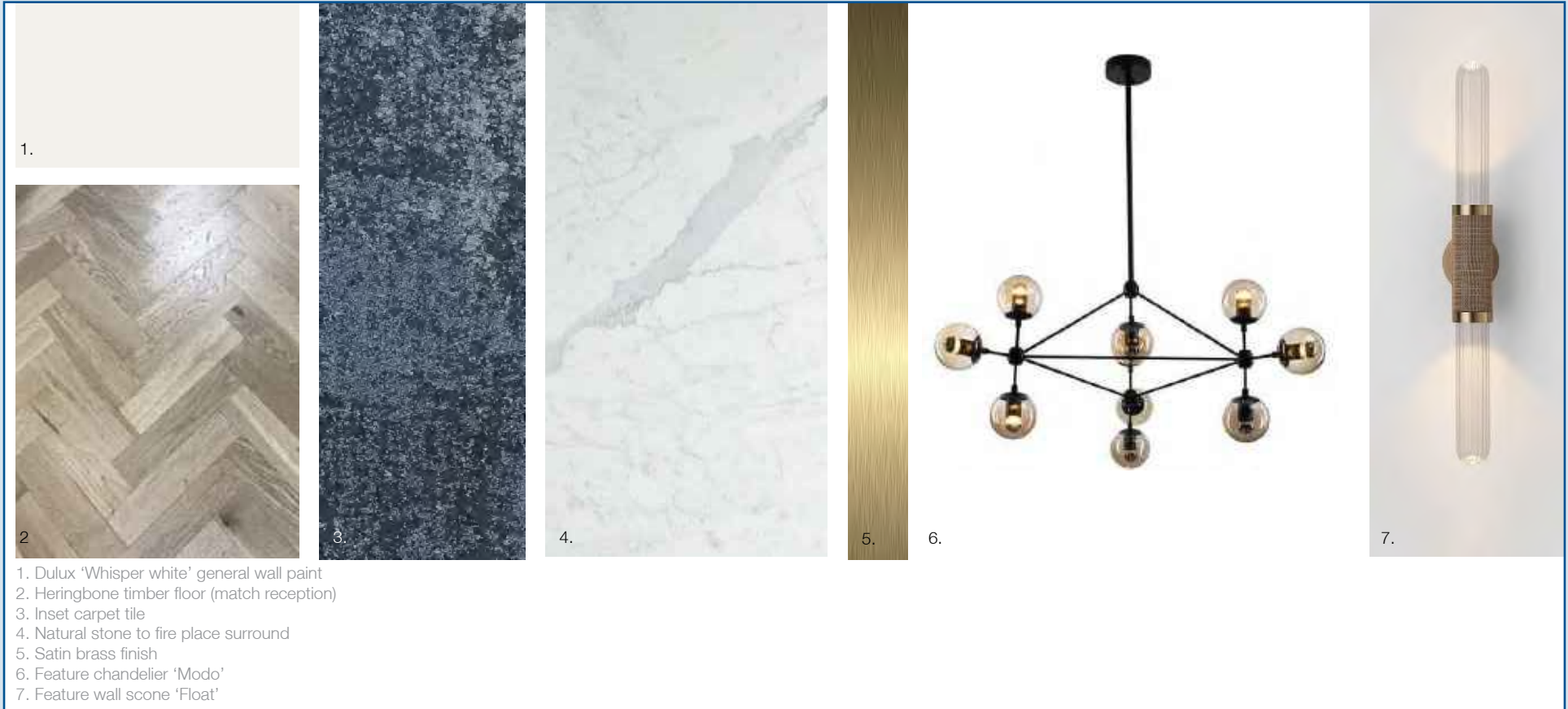
Cafe & Bar Finishes



Lower Ground Lounge & Casual Dining Inspiration



Lounge area 3D



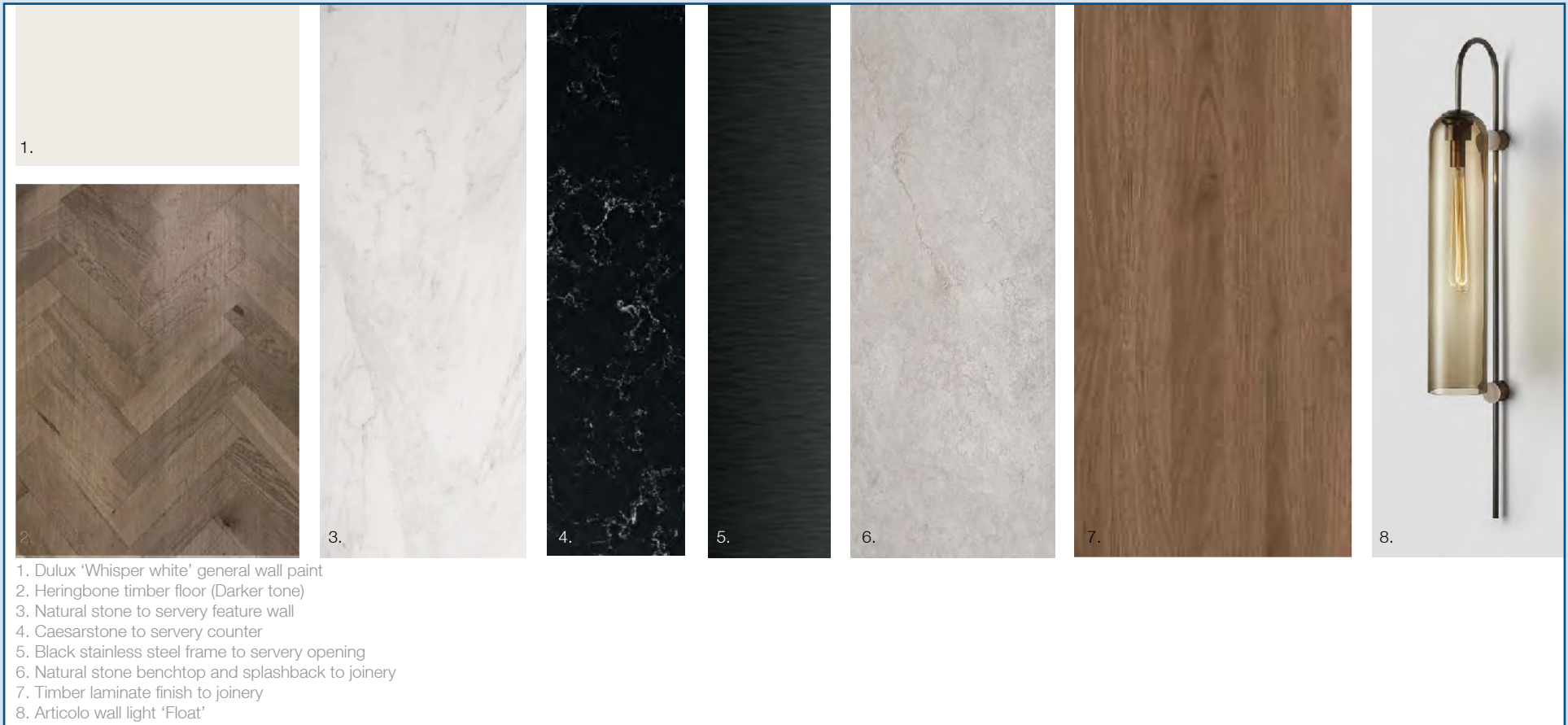
Lounge area Finishes



Lower ground Casual Dining area Inspiration



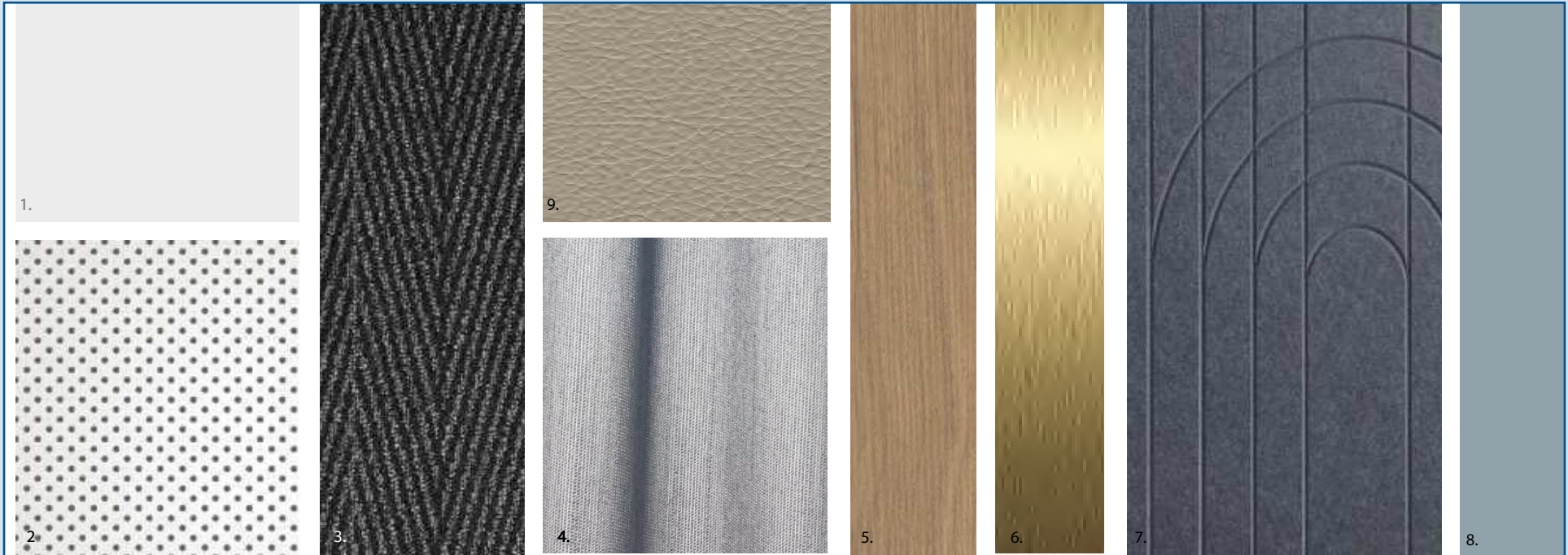
Lower Ground Casual Dining Area 3D



Lower Ground Casual Dining Area Finishes



Cinema 3D - Proposed 'Blue version'



1. Ceilings
2. Perforated plasterboard
3. Broadloom carpet 'Chevron'
4. Velvet Curtain
5. Laminate Timberlook
6. Brass Trims
7. Etched Art Deco Acoustic wall covering
8. Wall Paint to match Panelling
9. Leatherlook Vinyl Upholstrey

Cinema Finishes - Proposed 'Denim version'



Fitness Studio 3D



Dulux 'Whisper White'
general wall paint



Instyle Ecoustic panel
'Fresco'



Rimex
Stainless steel in 'Satin
Brass' finish



Instyle Leather look
vinyl



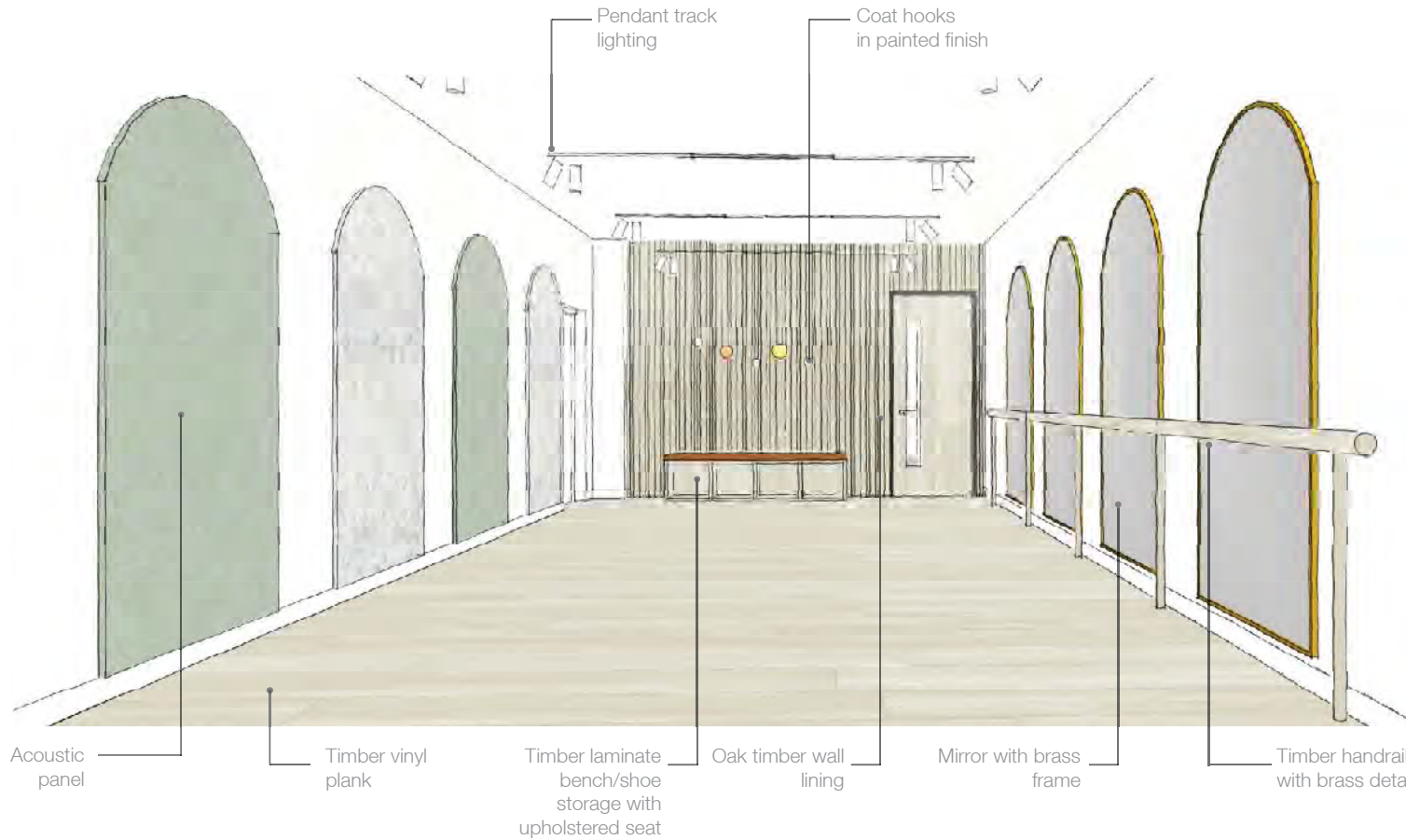
Timber Vinyl planks



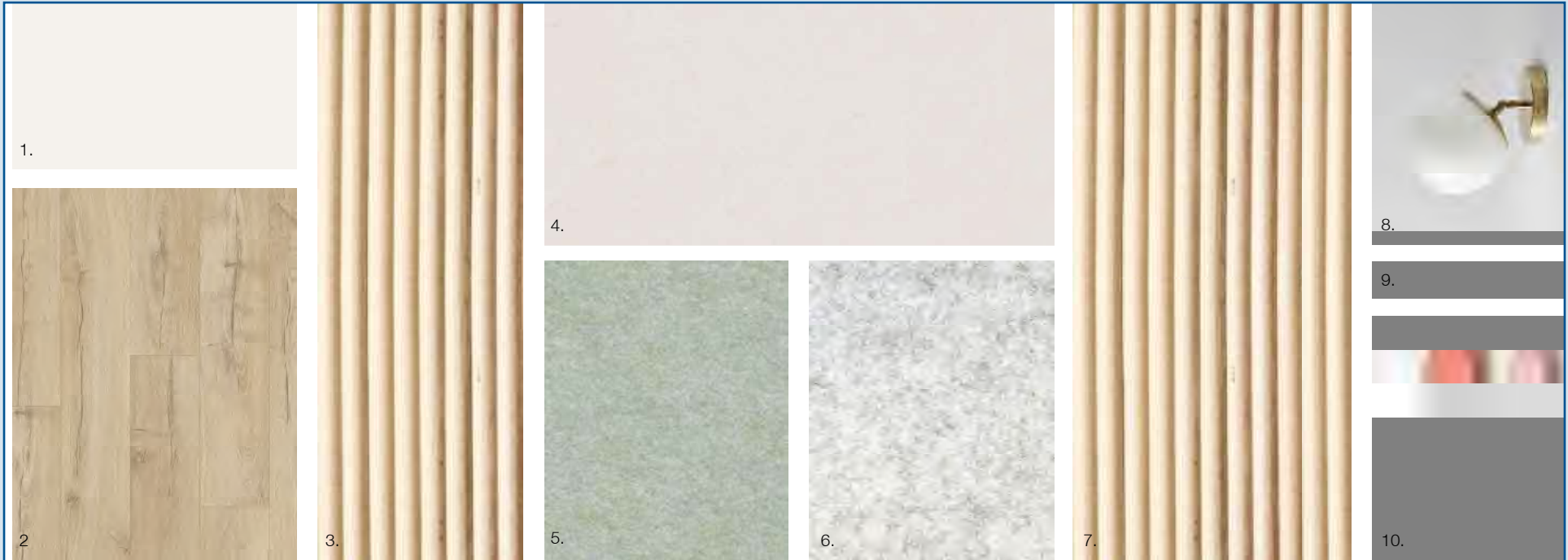
Instyle Ecoustic panel
'Natural'



Porta Contours oak
timber wall lining

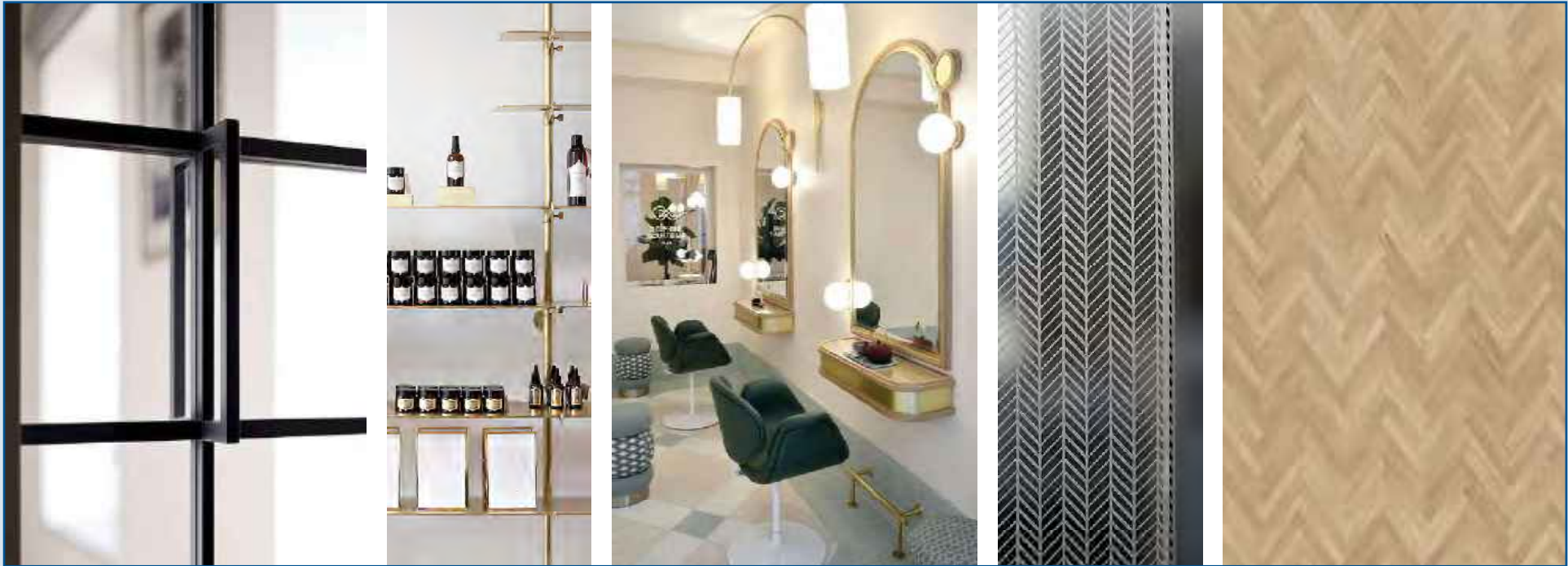


Fitness Studio 3D

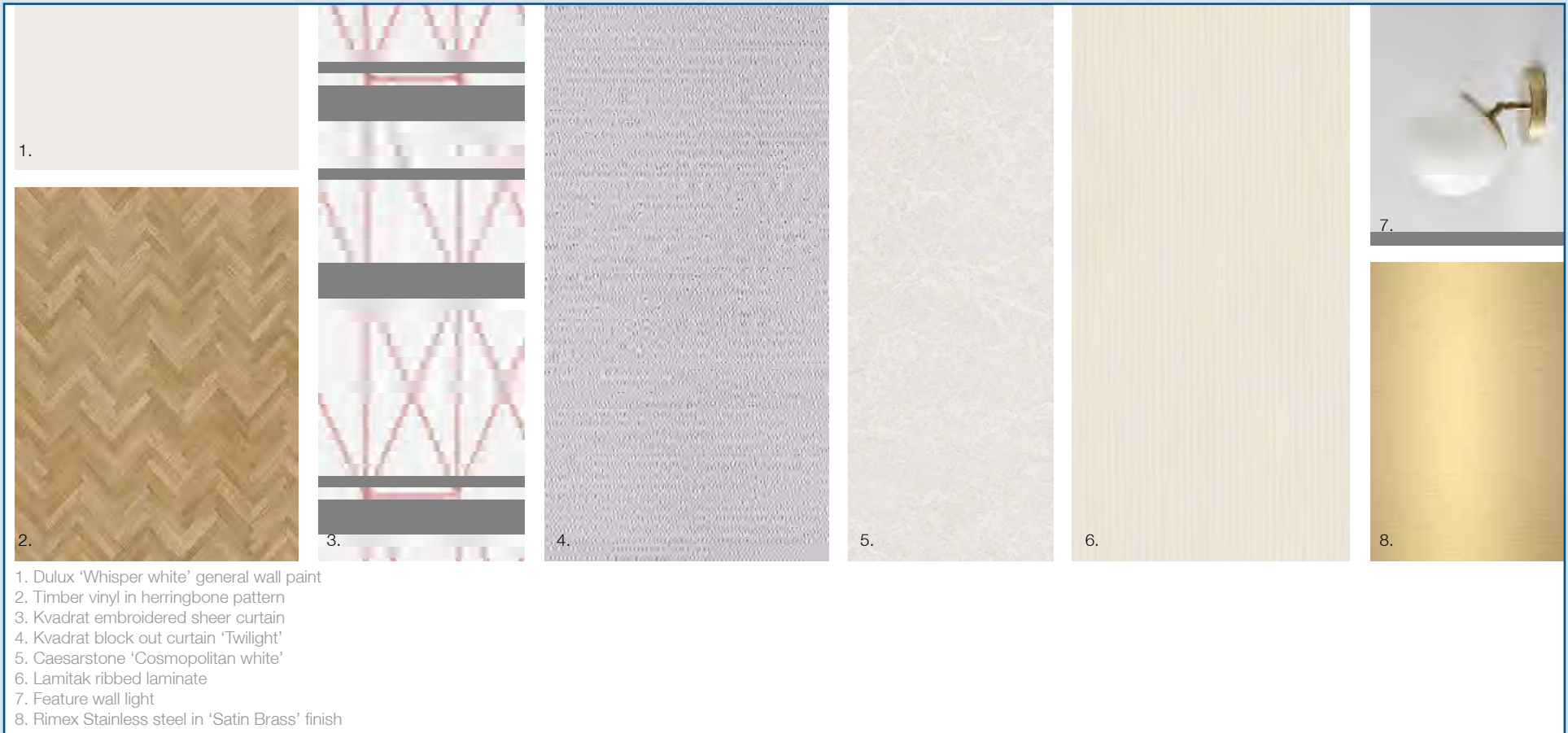


1. Dulux 'Whisper white' general wall paint
2. Timber vinyl plank
3. Porta contour oak timber wall lining
4. Caesarstone 'Cosmopolitan white'
5. Instyle Ecooustic panel 'Fresco'
6. Instyle Ecooustic panel 'Natural'
7. Porta oak timber half dowel to joinery cupboards
8. Douglas and Bec 'Line blush' glass wall light
9. Rimex Stainless steel in 'Satin Brass' finish
10. Muuto timber coat hook in paint finish

Fitness Studio Finishes



Level 1 Beauty Salon Inspiration



Beauty Salon Finishes



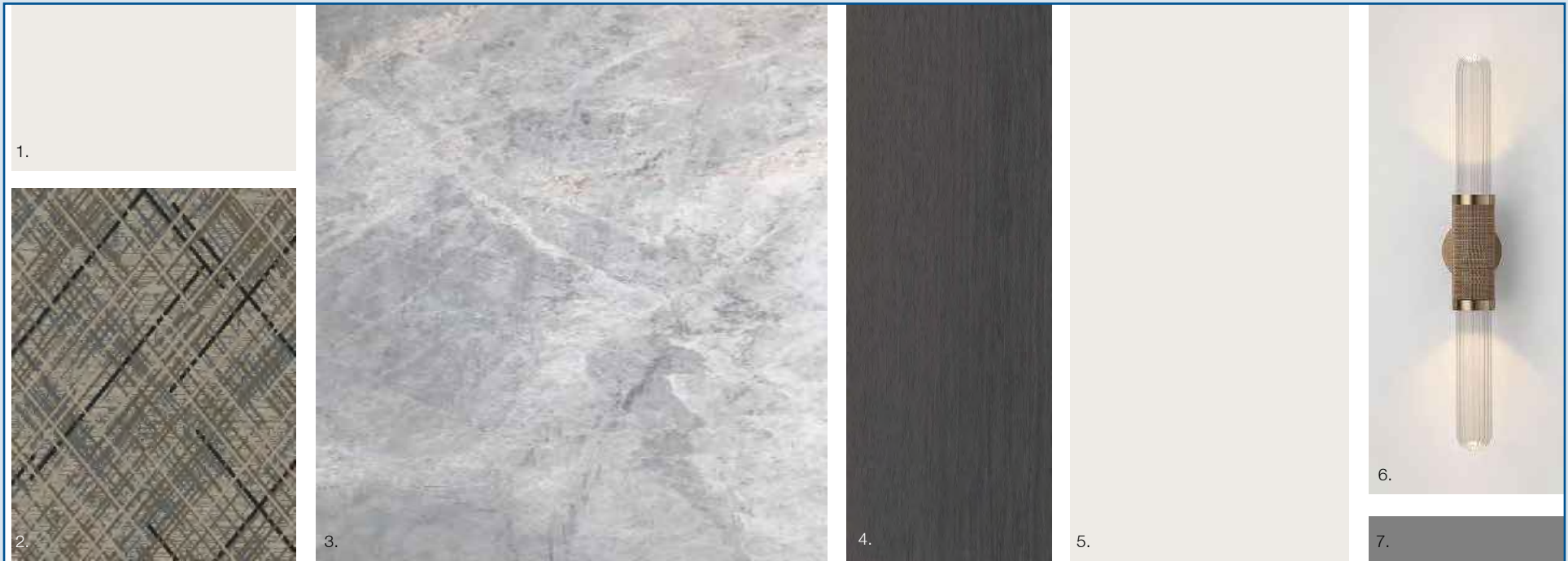
Level 1 Business Area & Library Lounge Inspiration



Library Lounge 3D

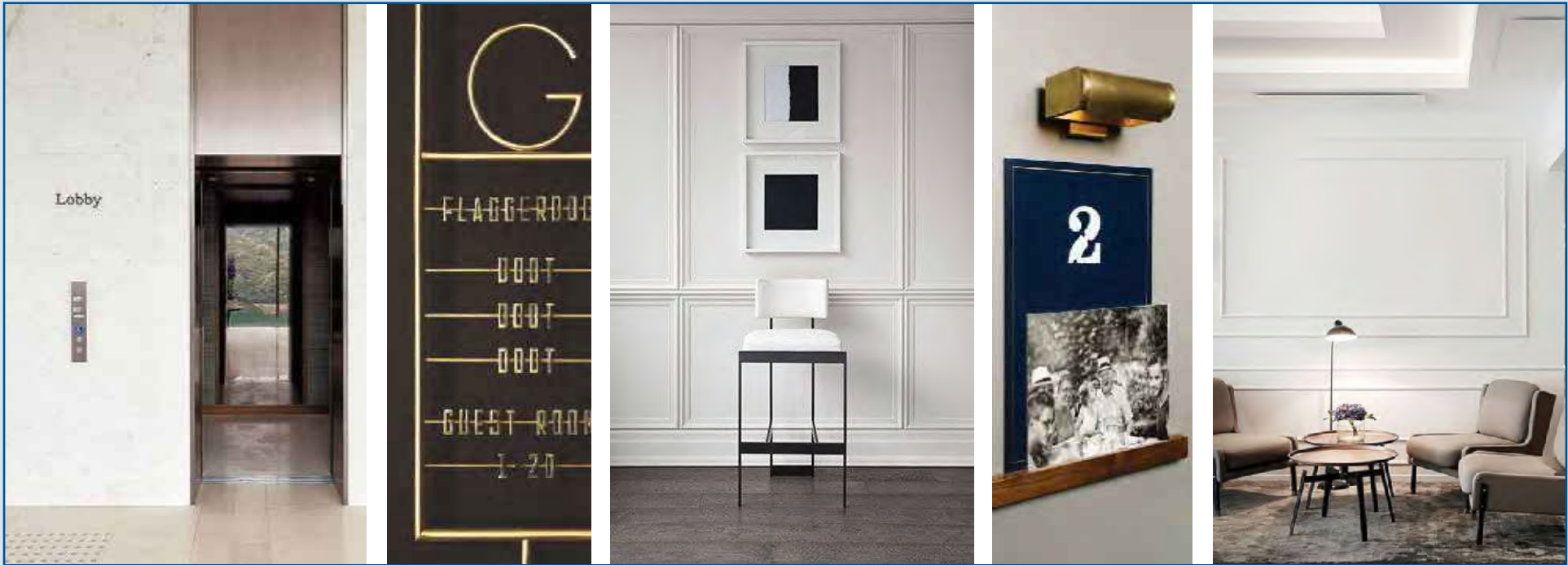


Business Lounge 3D



1. Dulux 'Whisper white' general wall paint
2. Brintons custom carpet
3. Natural stone to fireplace base and joinery 'Silver shadow'
4. Polytec timber laminate 'Empire Oak'
5. 2Pac finish to joinery
6. Articolo wall light 'Float'
7. Rimex Stainless steel in 'Satin brass' finish

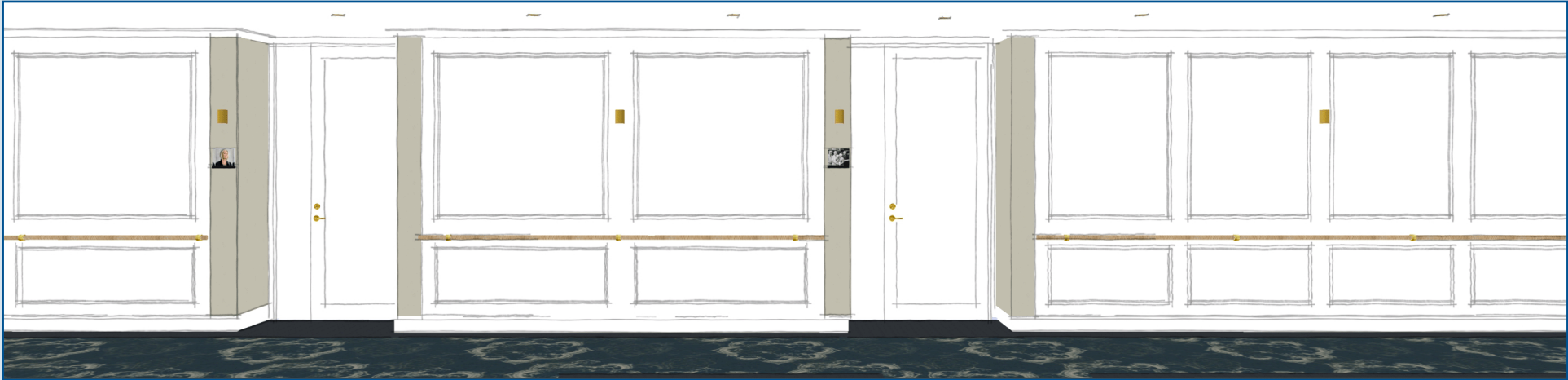
Business & Library Lounge Finishes



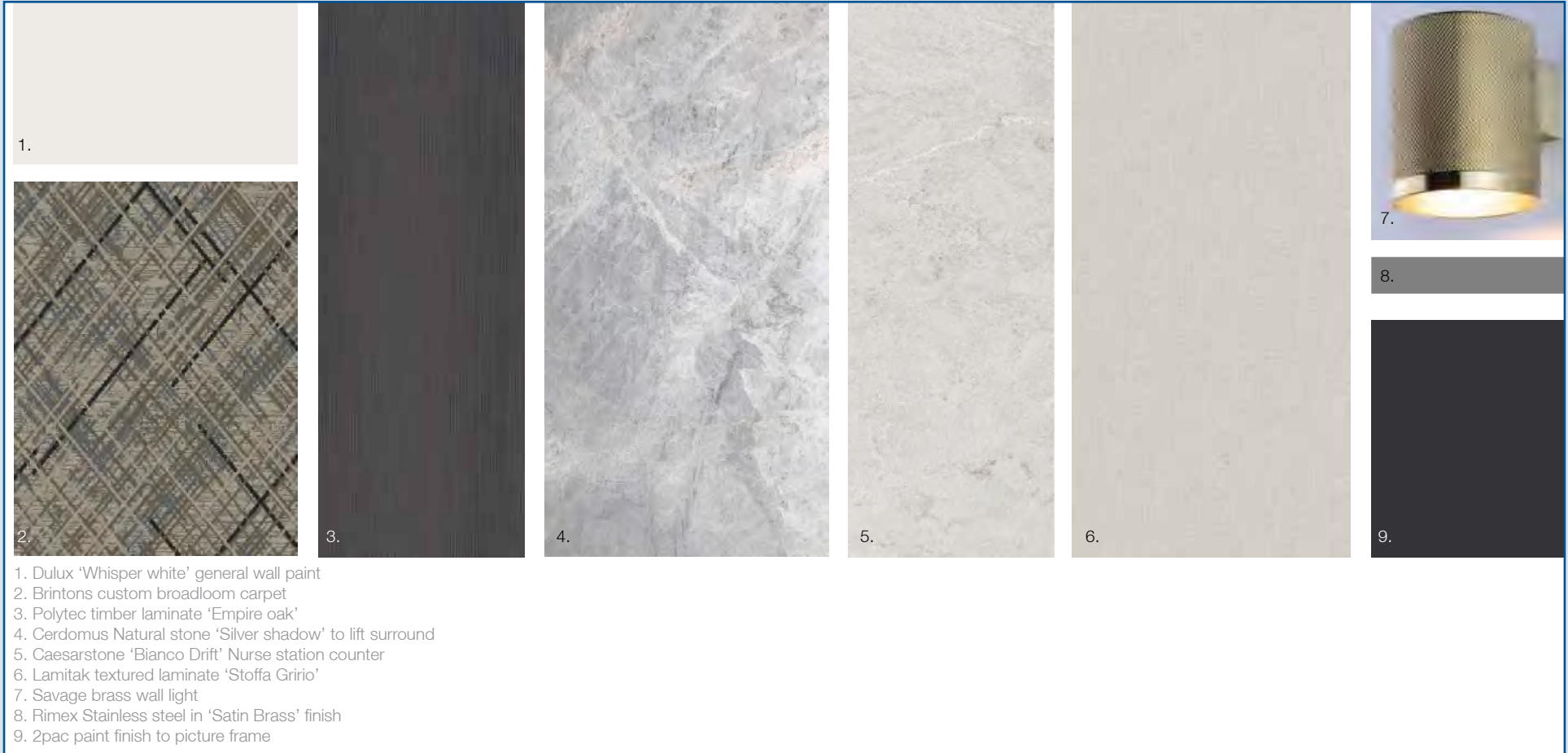
Typical Corridor & Resident Suite entry Inspiration



Typical Nurse Station and Lift entry 3D



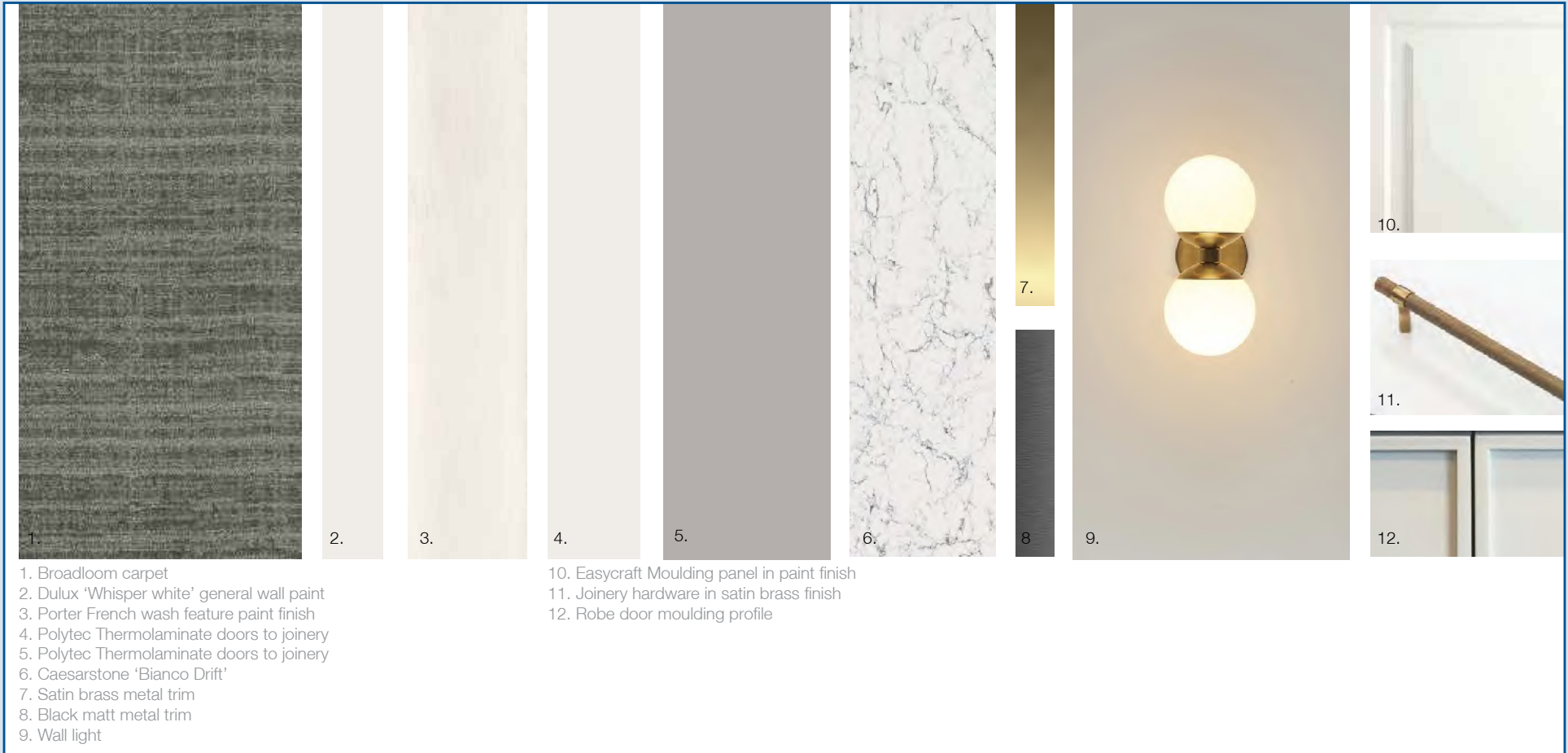
Typical Corridor & Resident Suite entry elevation



Typical Corridor & Resident Suite entry Finishes



Current Resident Bedroom Perspective



Resident Bedroom Finishes

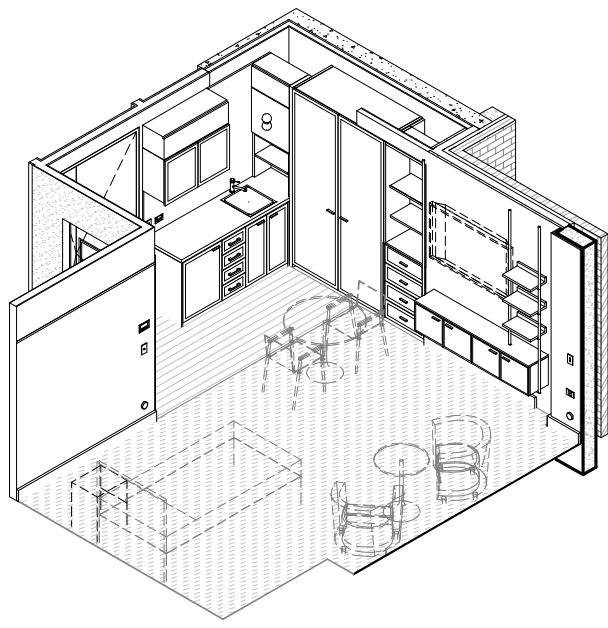
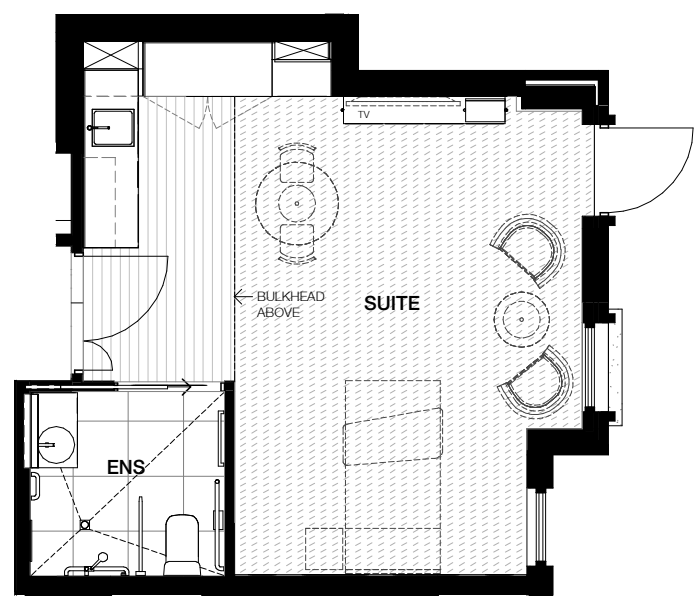


Resident Kitchenette & TV Unit



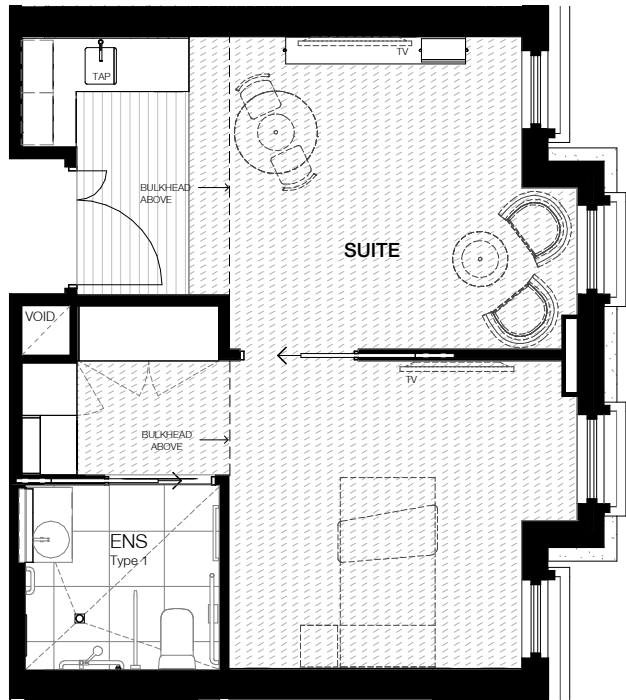
Salon

Type 1
G.04

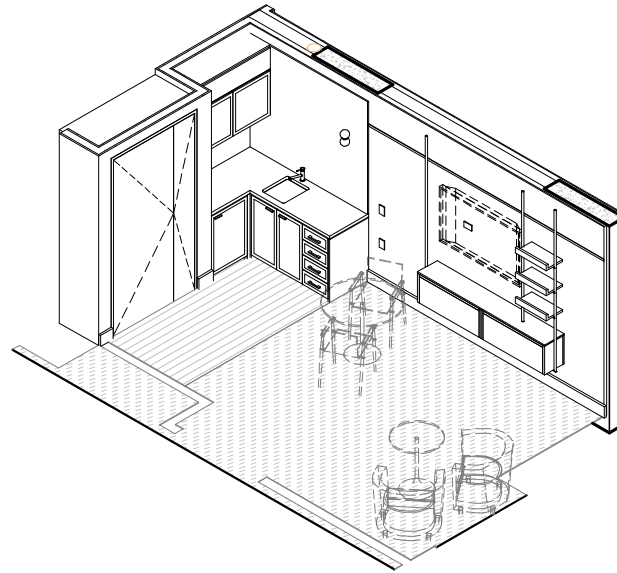


Suite Area = 29.5m² Approx.

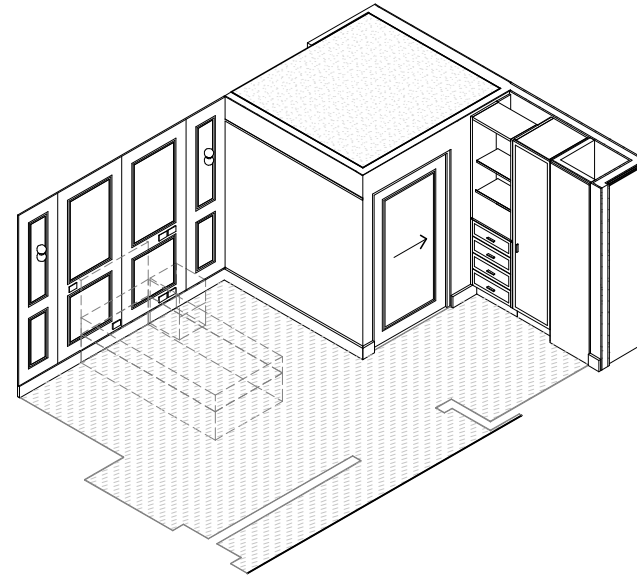
Suite configuration is indicative only. Refer to floor plans for further information of individual suites.



Suite Area = 37m² Approx.

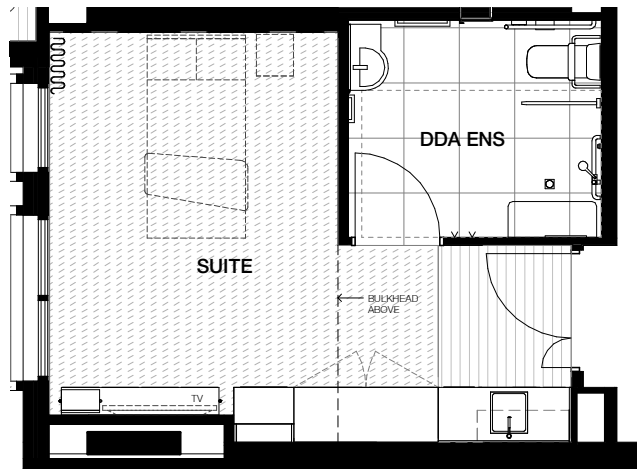


Type 2	
G.05	
G.06	
1.45	
1.46	
2.49	
2.50	

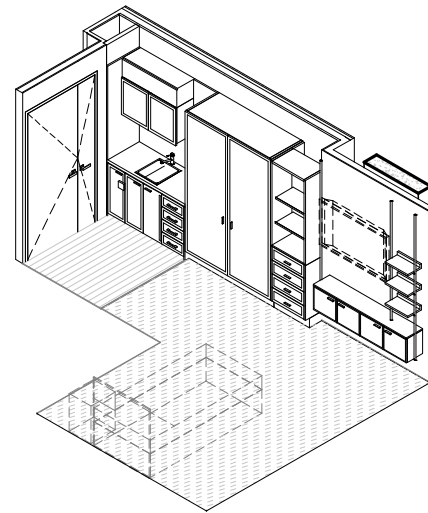


Clarke Hopkins Clarke Typical Suite Layout - Type 2
Kew Gardens Aged Care

Suite configuration is indicative only. Refer to floor plans for further information of individual suites.

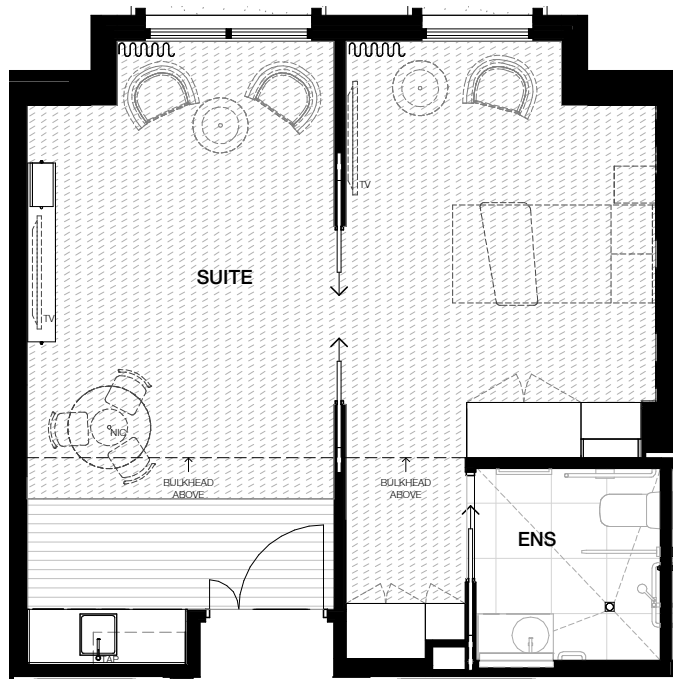


Suite Area = 25m² Approx.

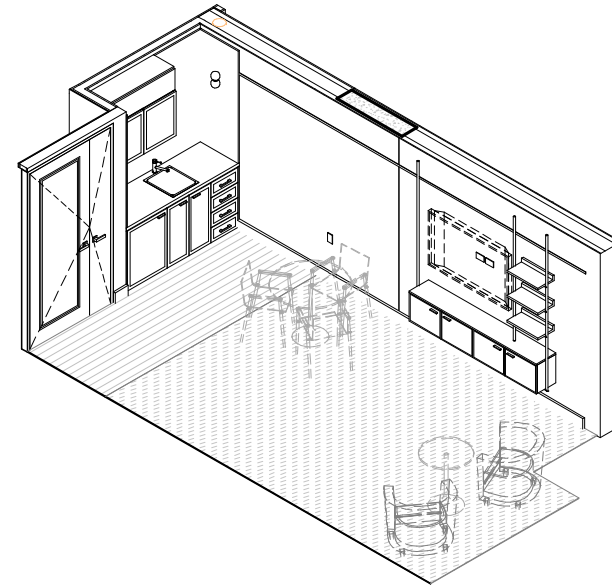
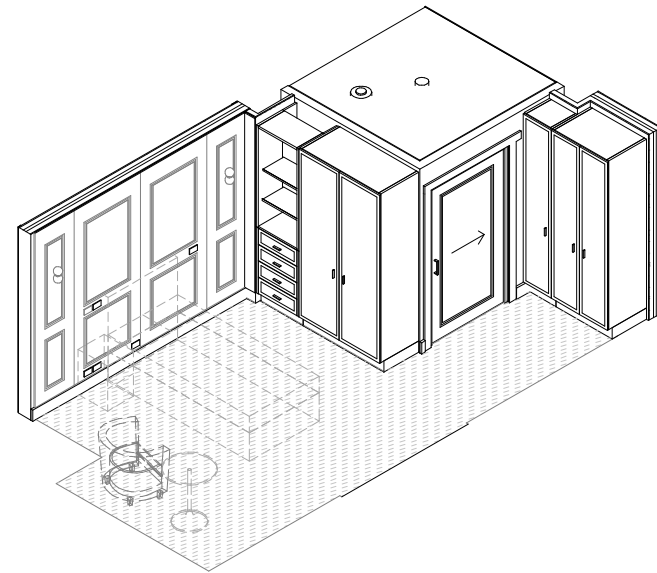


Type 3
G.07
1.47
2.51

Suite configuration is indicative only. Refer to floor plans for further information of individual suites.

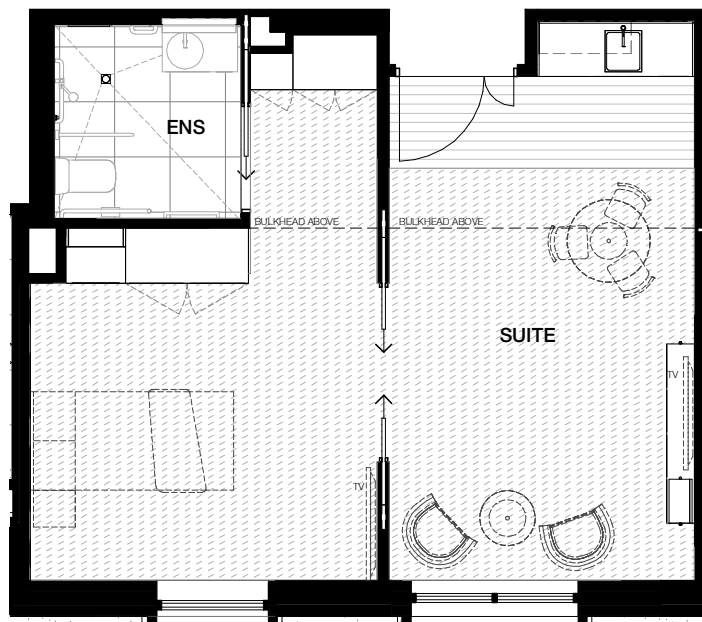


Suite Area = 43m² Approx.

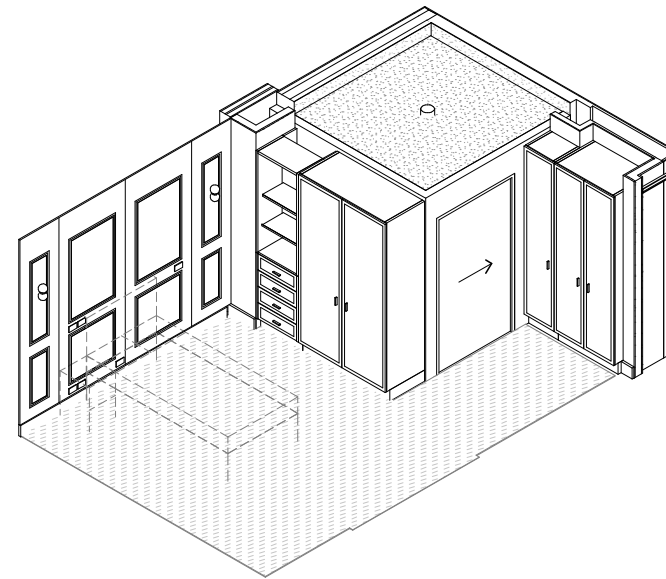


Type 4	
G.03	
G.02	
G.01	
G.08	
G.09	
G.10	
G.11	
G.12	
1.49	
1.39	
1.51	
1.37	
1.38	
1.40	
1.50	
1.52	
1.48	
2.52	
2.53	
2.54	
2.44	
2.55	
2.56	
2.45	
2.46	
2.47	
3.01	
3.02	
3.03	
3.04	

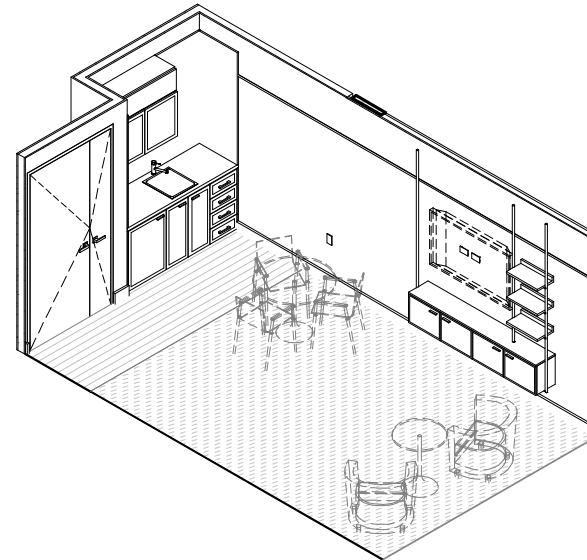
Suite configuration is indicative only. Refer to floor plans for further information of individual suites.



Suite Area = 41m² Approx.

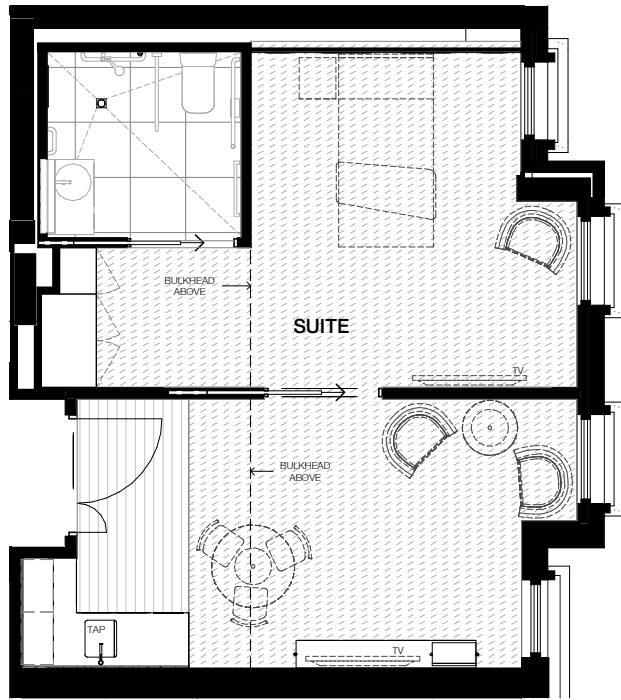


Type 5
G.13
1.53
2.57

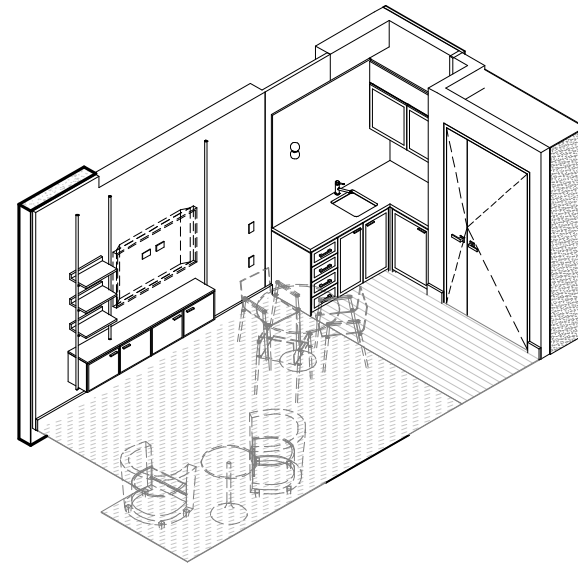


Clarke Hopkins Typical Suite Layout - Type 5
Kew Gardens Aged Care

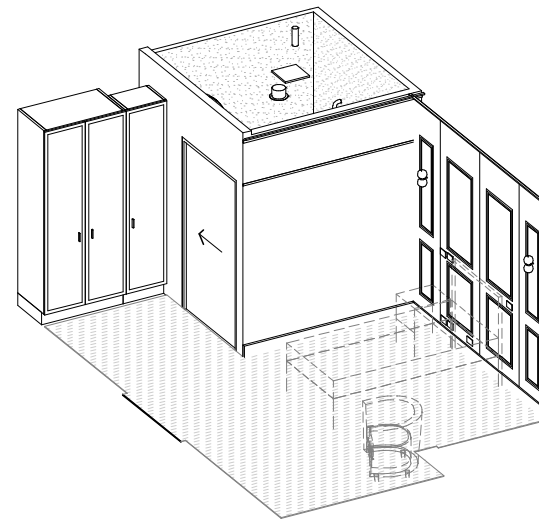
Suite configuration is indicative only. Refer to floor plans for further information of individual suites.



Suite Area = 35.5m² Approx.

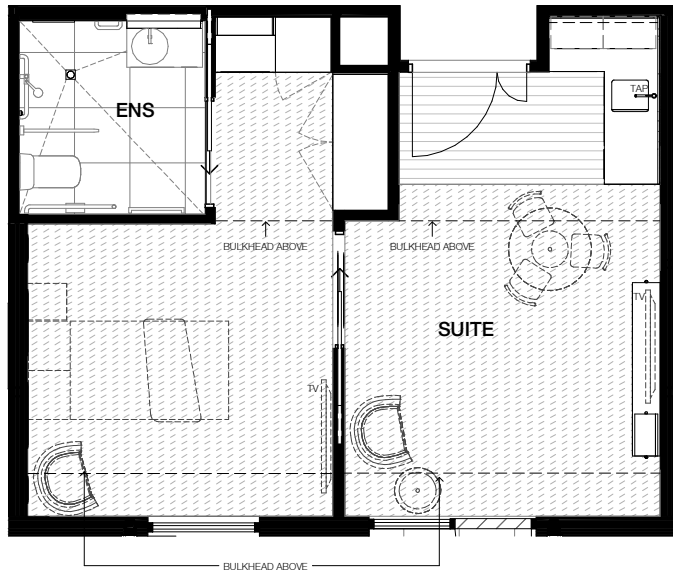


Type 6
1.44
2.48

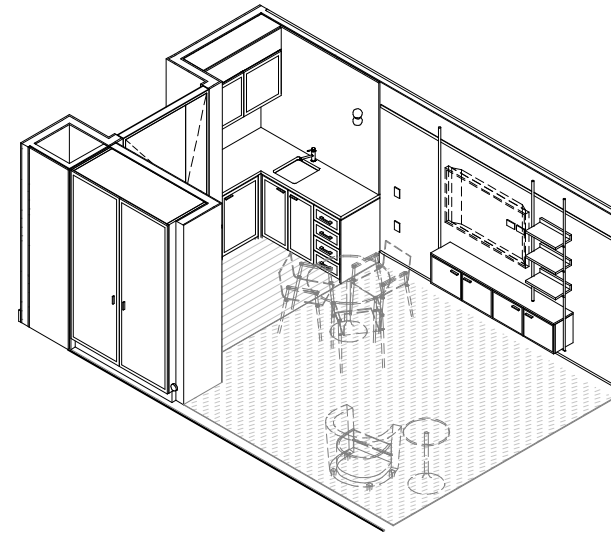


Clarke Hopkins Typical Suite Layout - Type 6
Clarke Hopkins Kew Gardens Aged Care

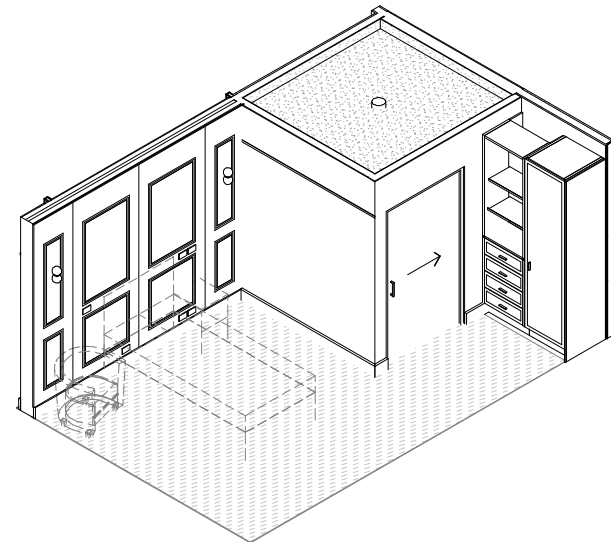
Suite configuration is indicative only. Refer to floor plans for further information of individual suites.



Suite Area = 35m² Approx.

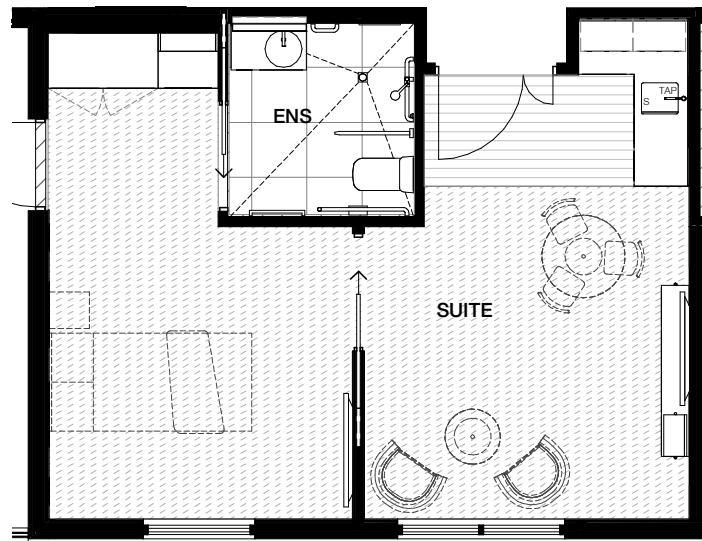


Type 7	
3.07	
3.11	
3.10	
3.09	
3.08	

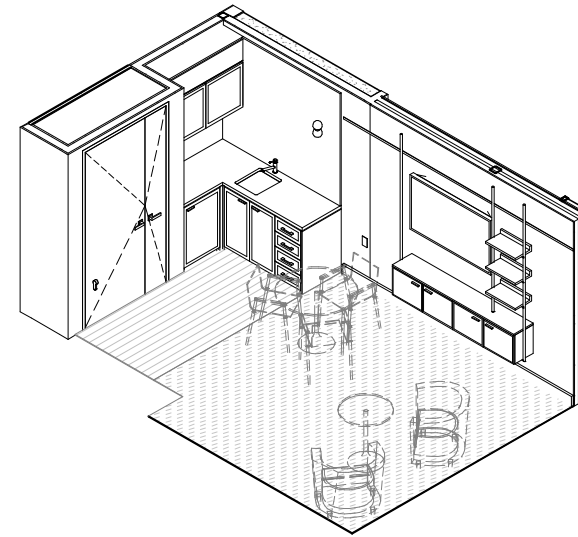


Clarke Hopkins Typical Suite Layout - Type 7
Kew Gardens Aged Care

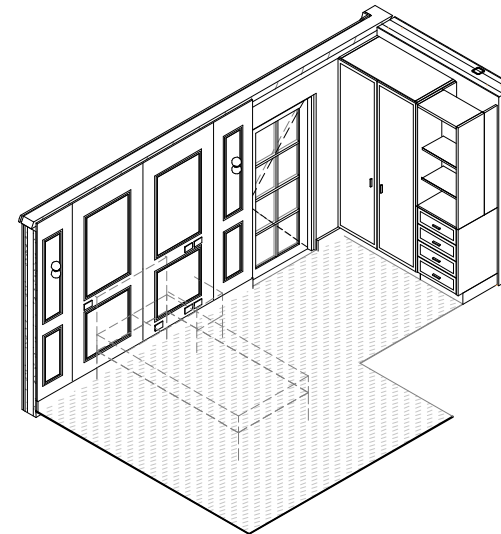
Suite configuration is indicative only. Refer to floor plans for further information of individual suites.



Suite Area = 35.5m² Approx.



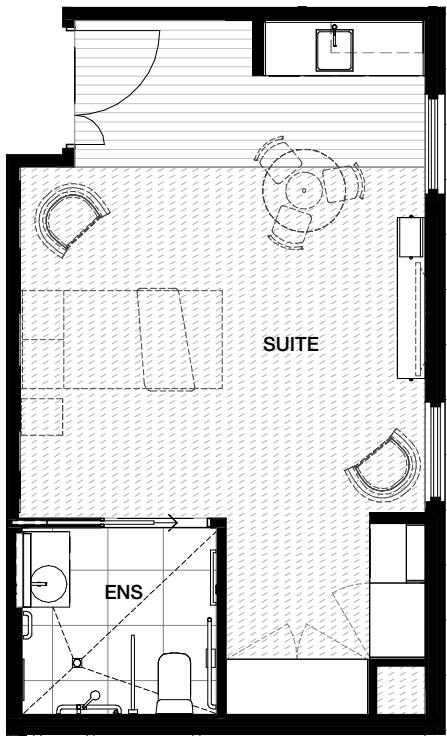
Type 8
3.12



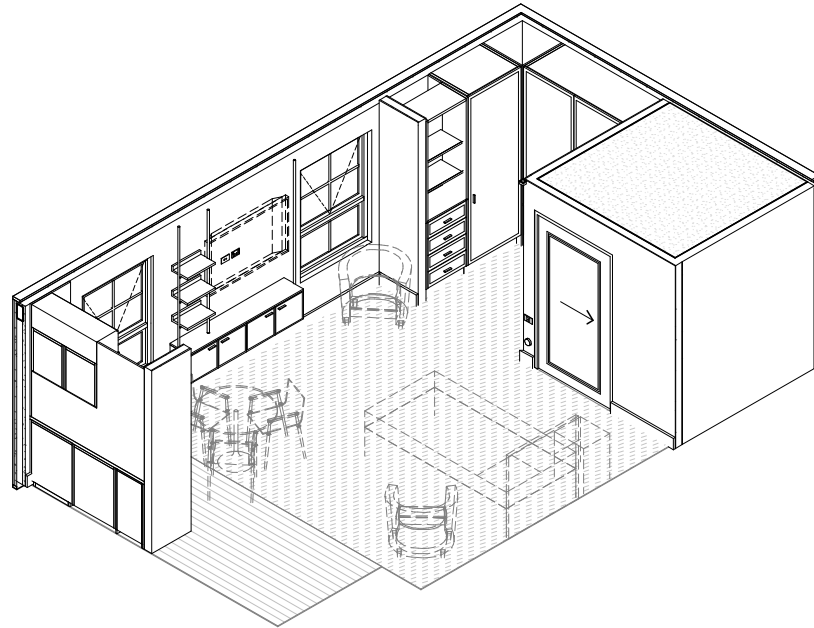
Clarke Hopkins Typical Suite Layout - Type 8
Kew Gardens Aged Care

Suite configuration is indicative only. Refer to floor plans for further information of individual suites.

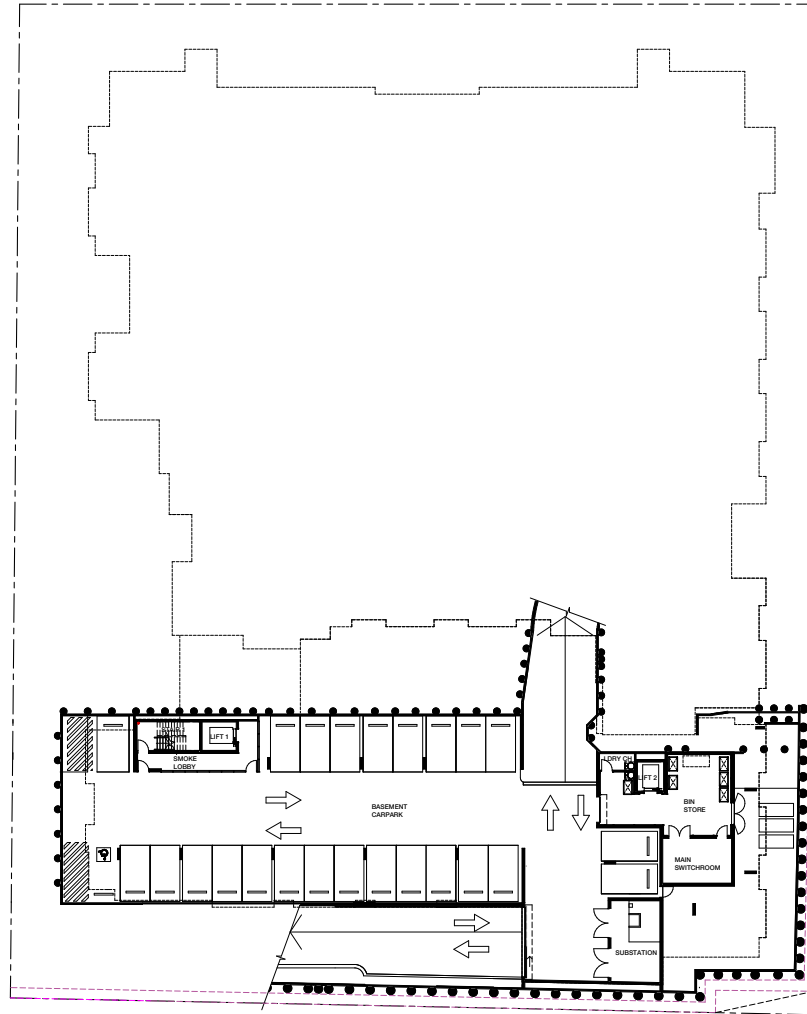
Type 9
3.06
3.05

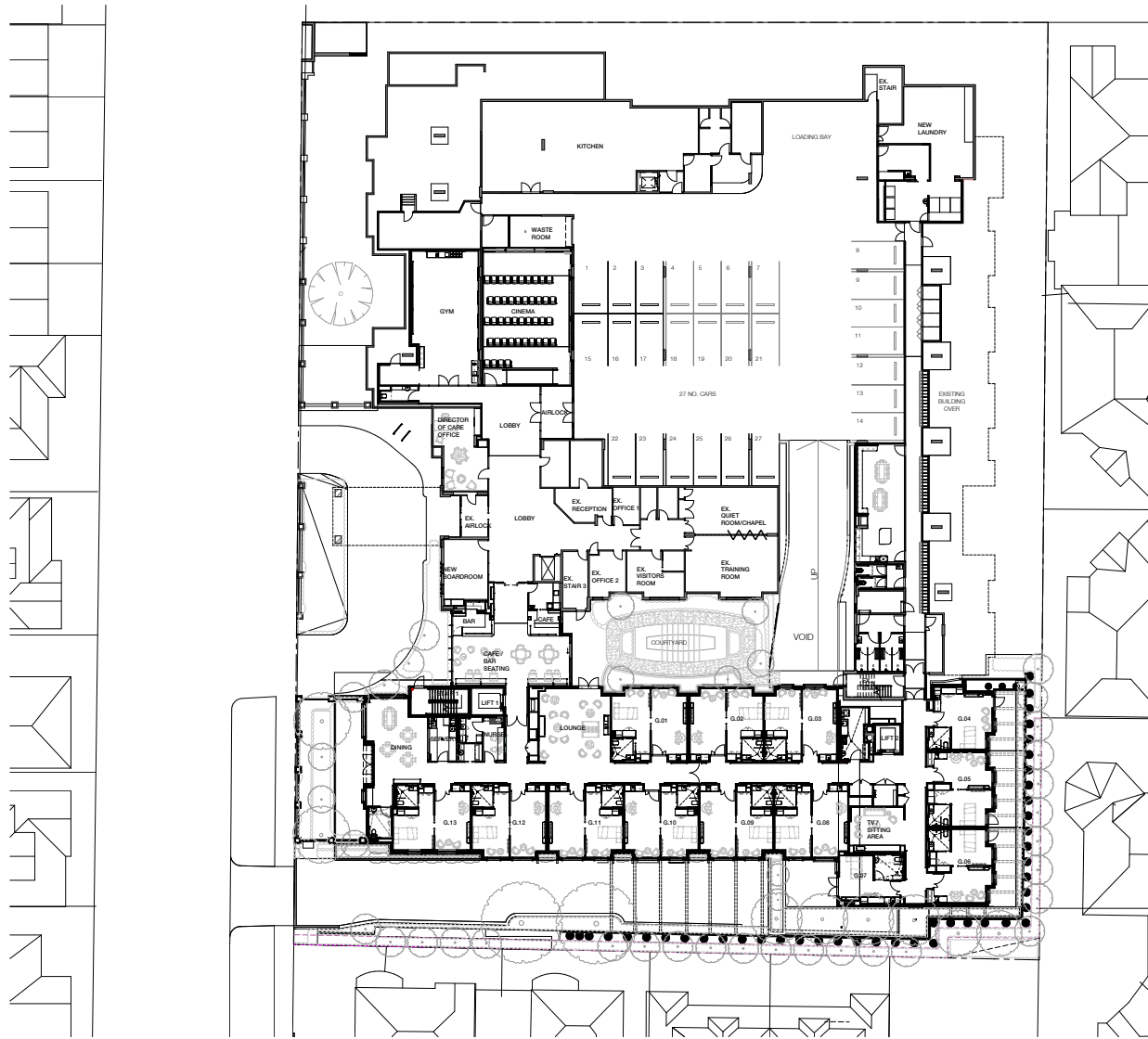


Suite Area = 31m² Approx.



Suite configuration is indicative only. Refer to floor plans for further information of individual suites.

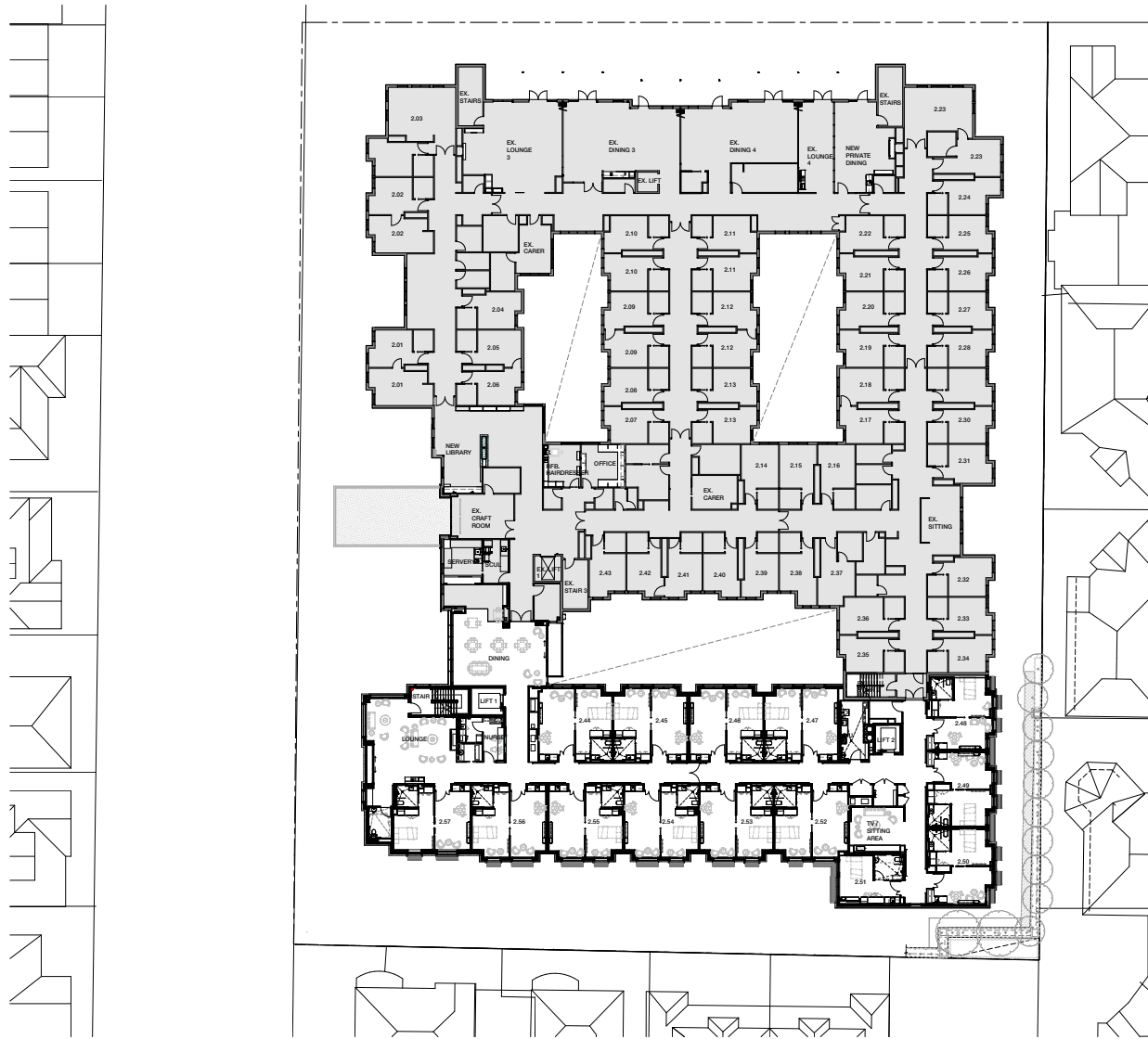





 Ground Floor Overall Plan
Kew Gardens Aged Care



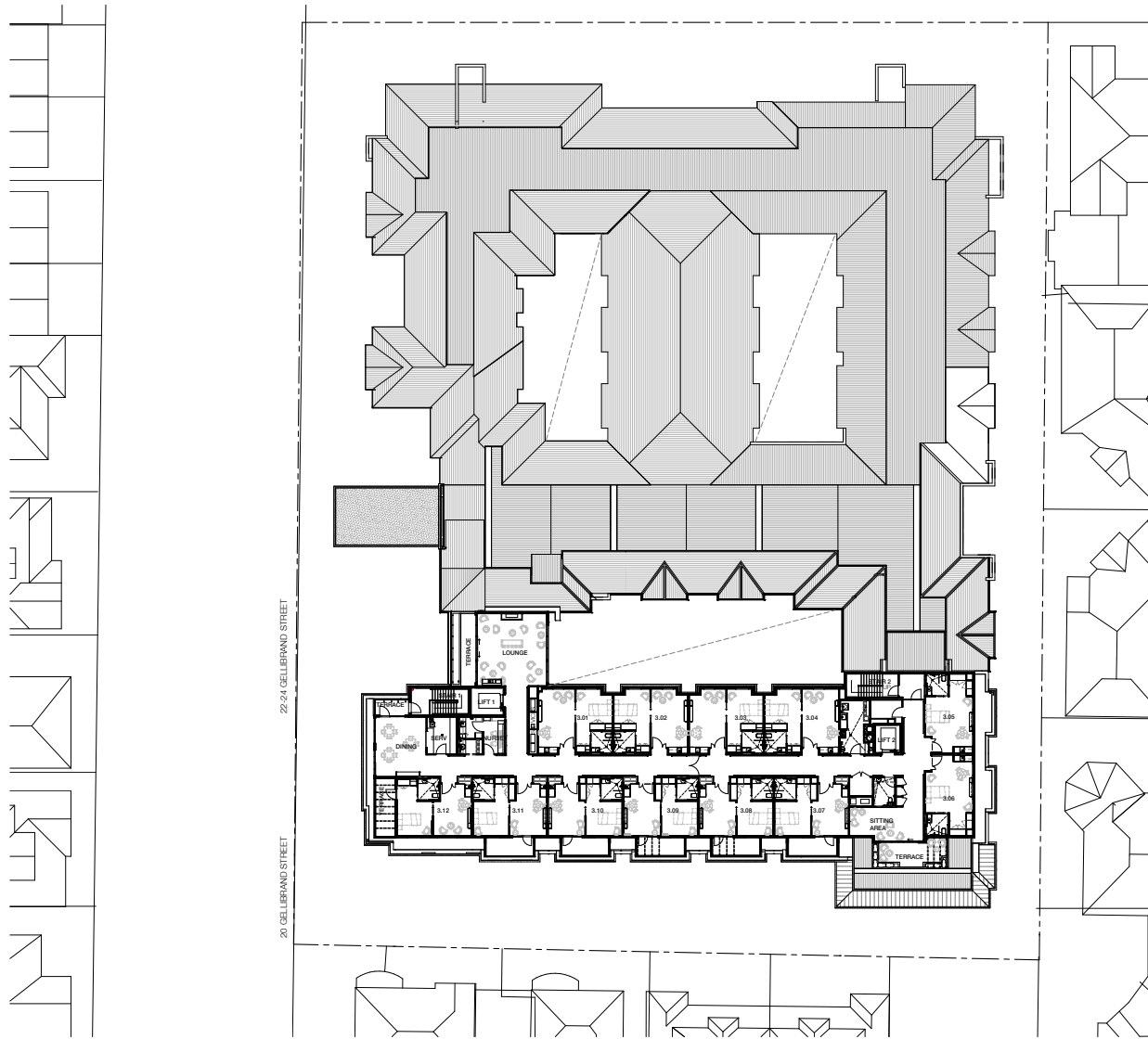
Scale 1:200 at A1




 Level 2 Floor Overall Plan
 Kew Gardens Aged Care



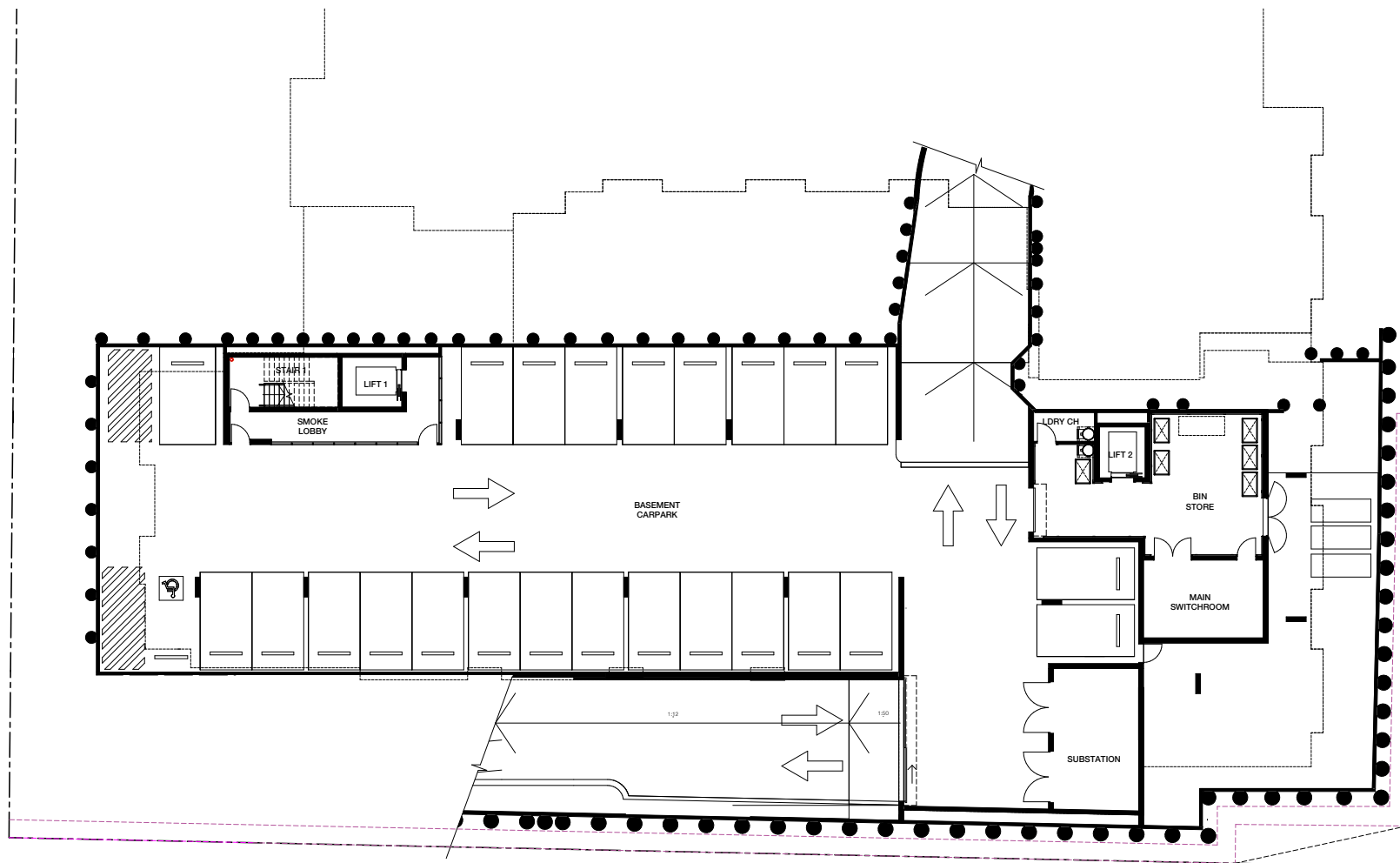
Scale 1:200 at A1

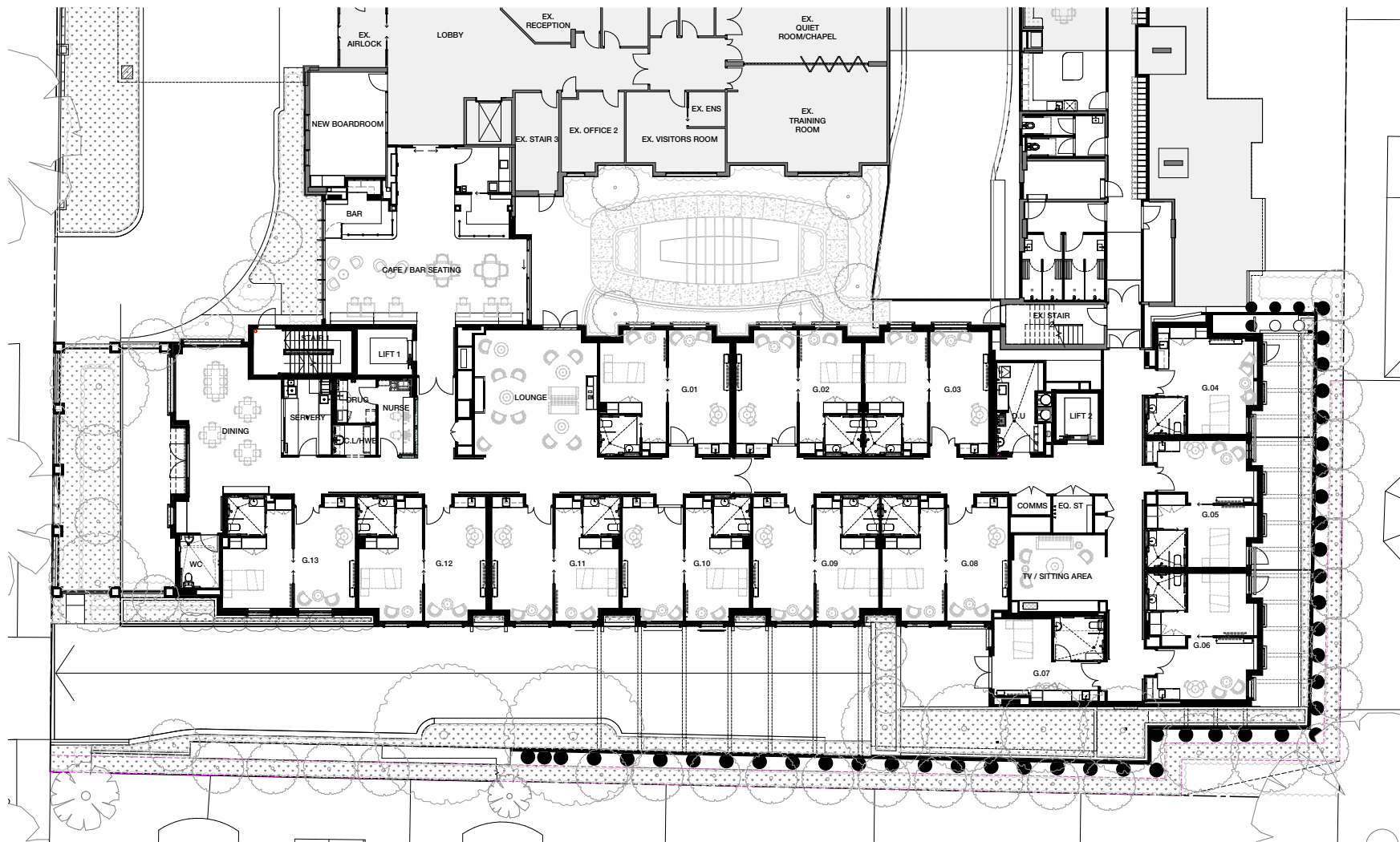



 Level 3 Floor Overall Plan
Kew Gardens Aged Care



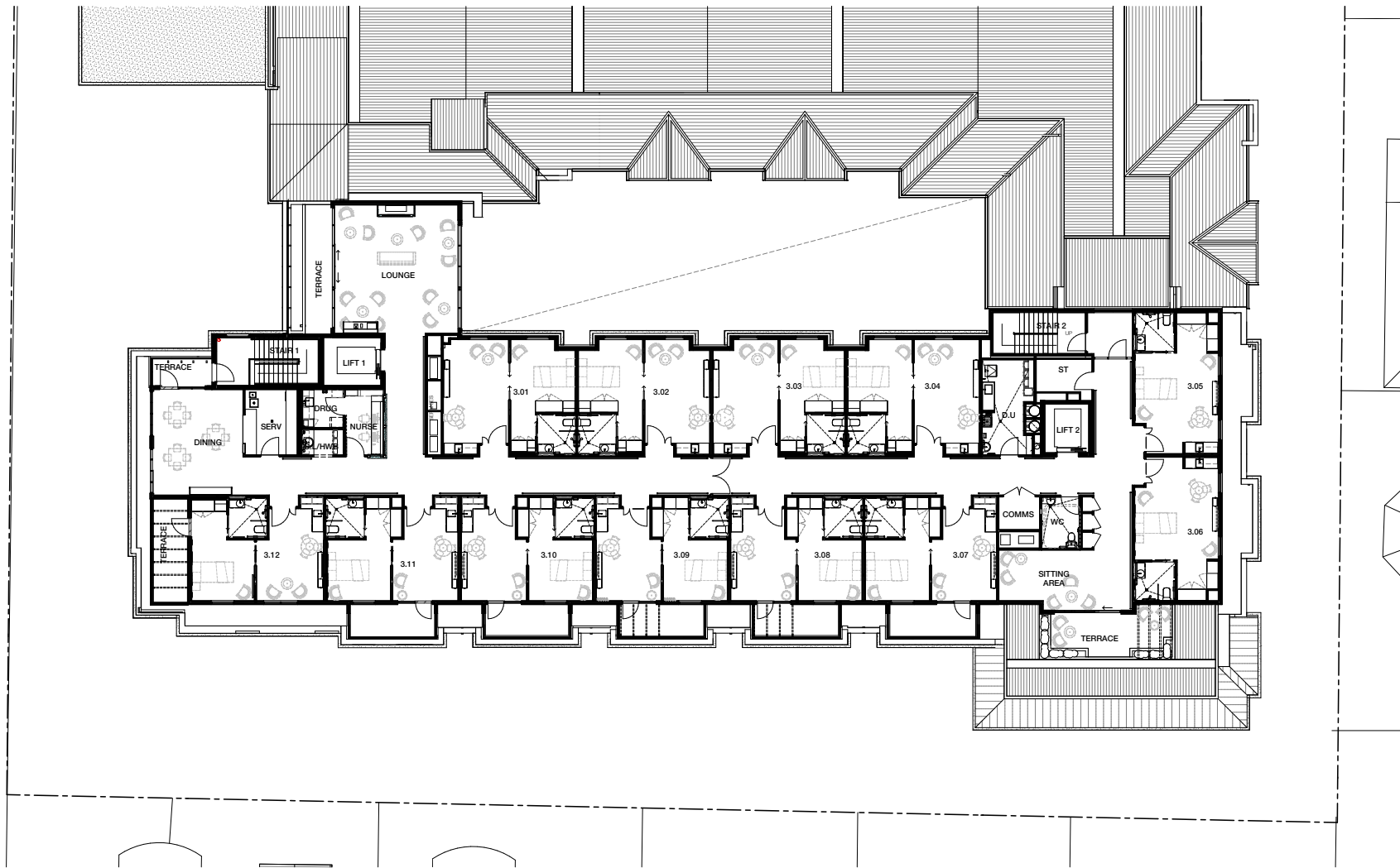
Scale 1:200 at A1











22-24 Gellibrand Street Kew VIC 3101
PO Box 2184 Kew VIC 3101
T 03 9261 8600 | F 03 9261 8666
www.kewgardens.com.au
ABN 51 105 702 985